




Tool Manager^{iQ}[™]

The Fully Integrated TDM Solution for  GIBBSCAM

**TMiQ[™] v2.5 Installation Manual
for GibbsCAM2022/Standalone**

**Windows 10
Intel Compatible Processor 1.4GHz/2GHz**

Installation Manual Version 1.0

Table of Contents

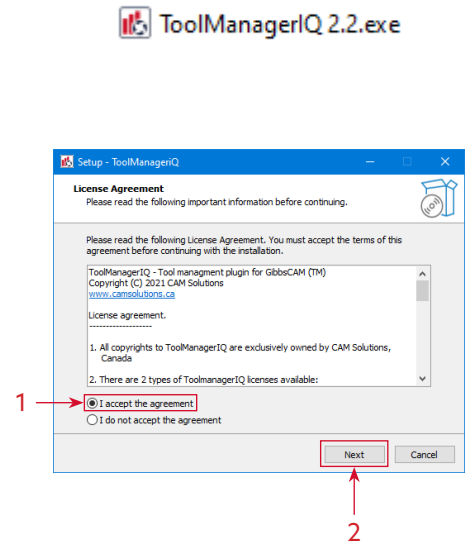
Installation Instructions

Install ToolManagerIQ™	1
How to Launch Standalone & Integrated Versions	5
Licensing	6
ToolManager Database Configuration SQL Server Setup	7
Uninstall ToolManagerIQ™	8

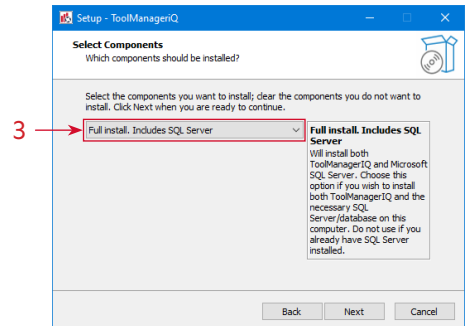
Installation Instructions

Start by downloading the installer from www.toolmanageriq.com. Run the executable and accept if it asks for permission to install. Both standalone and integrated versions use the same installer.

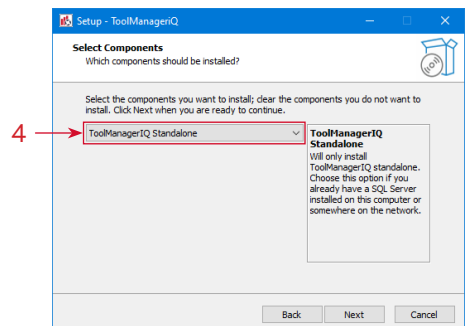
The installer should detect the proper language from your Windows settings. The license agreement must be accepted before moving on. Read the agreement and select the **I accept the agreement** radio button (1), then press **Next** (2).



Selecting what to install will depend on what is there already. If nothing has been installed then **Full Install** (3) can be used. It will install both ToolManagerIQ™ versions, along with the SQL software.

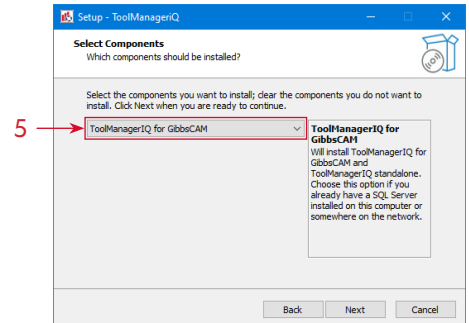


The components can also be installed separately. This includes the standalone version of ToolManagerIQ™ (4) that does not need GibbsCAM to run.

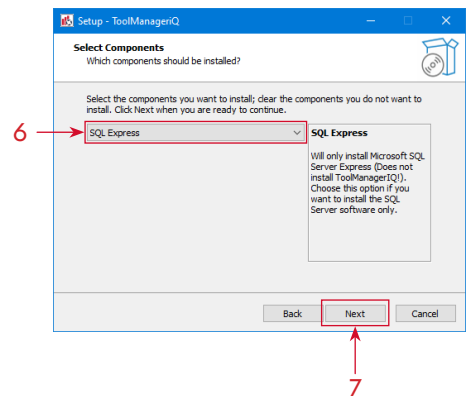


Installation Instructions

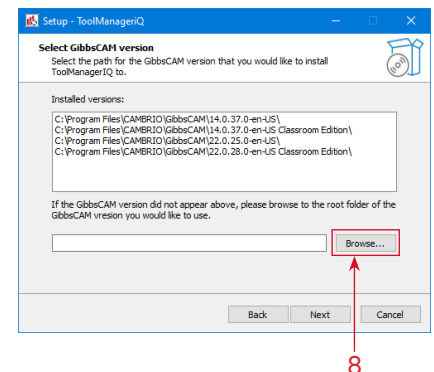
The ToolManagerIQ™ version that is integrated into GibbsCAM can be selected (5), but the standalone version will also be installed.



The SQL database (6) is the final option to install by itself. Select one of the options and press the **Next** button (7) to continue.

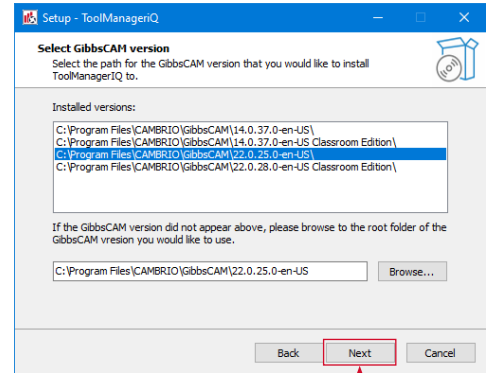
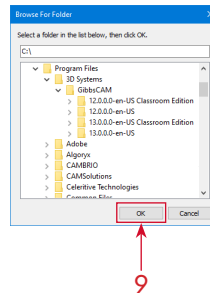


If the integrated version is being installed it will ask the user to select the GibbsCAM version for ToolManagerIQ™ to run in. The list should show all recent compatible GibbsCAM installations that exist on the system. GibbsCAM versions 12 and 13 will not be found because of a folder name change. In that case, you must use the **Browse** button (8) to find the directory.

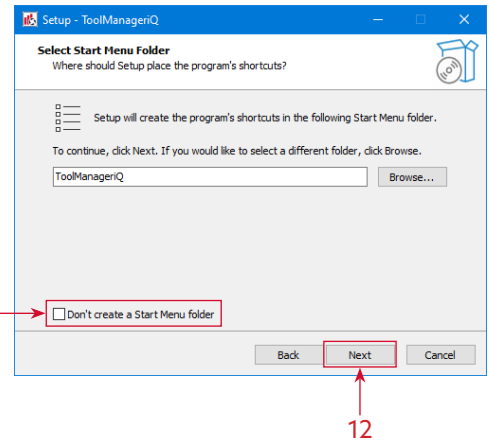


Installation Instructions

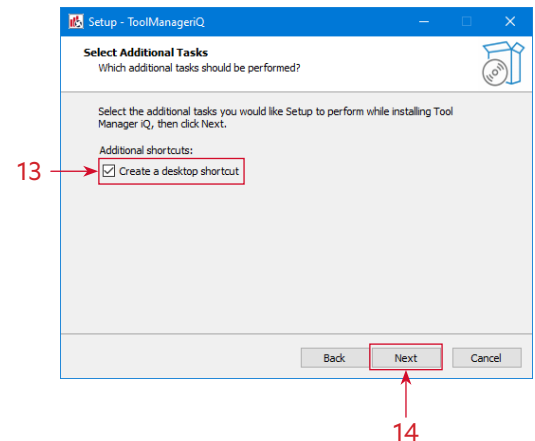
The **Browse** button will let the user navigate to the desired GibbsCAM installation folder. Once the proper one is selected the **OK** button (9) can be pressed, followed by **Next** (10).



A start menu entry will be created with the given name, unless **Don't create a Start Menu folder** is selected (11). Press **Next** (12) to continue.

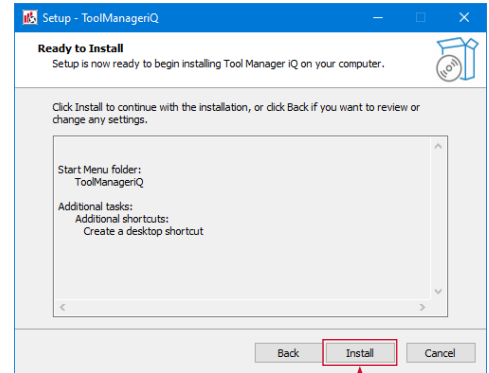


A desktop shortcut will be created by default that can be used to launch the standalone version of ToolManagerIQ™. If the **Create a desktop shortcut** option (13) is deselected the software will have to be launched from the Start menu. Use the **Next** button (14) to proceed.



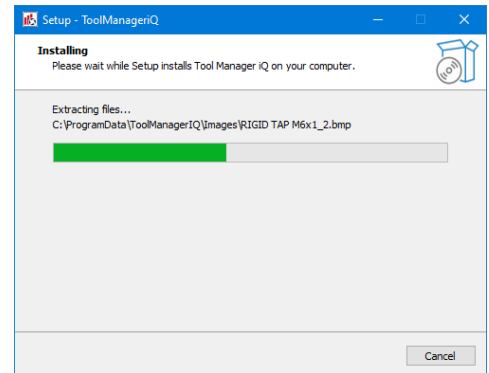
Installation Instructions

A review of the selections will be shown on the next page. Press the **Install** button (15) to start the process.

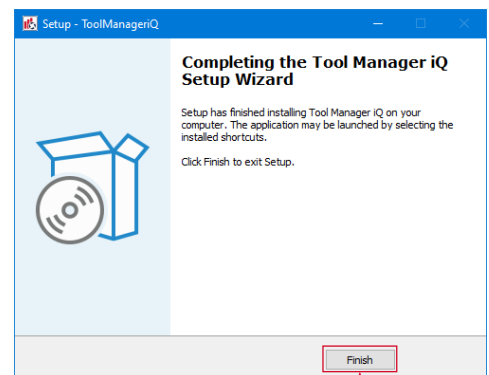


15

The installer will display its progress as it performs the task. The time it takes will depend on the computer on which it is installed.



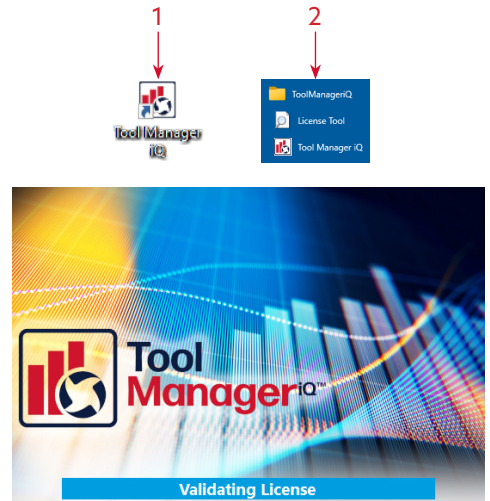
After the installation is complete, pressing the **Finish** button (16) will close the dialog. If there is already an active license available then ToolManagerIQ™ can be launched. If the software still needs to be registered, please refer to the following **Licensing Section**.



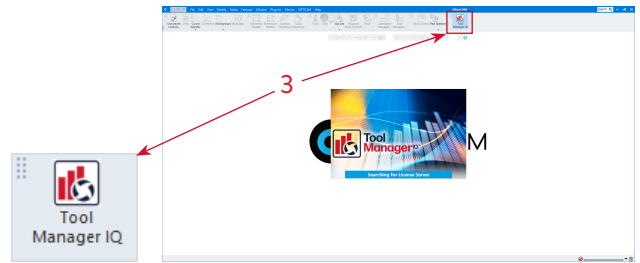
16

Licensing & First Launch

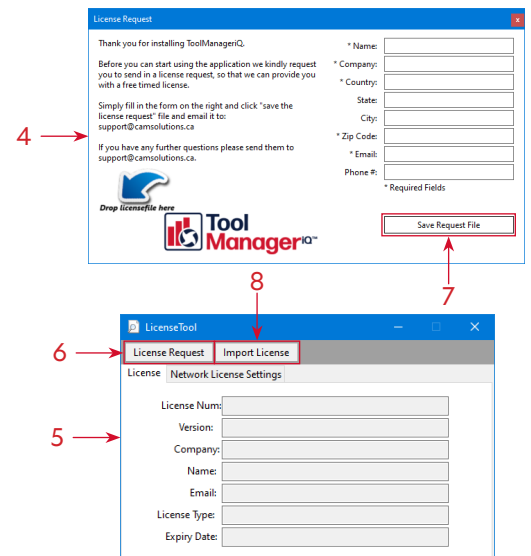
The method used to launch the ToolManagerIQ™ software depends on what version is required. The standalone version will have a desktop shortcut (1) and Start menu entry (2) if they were created during installation. The installation folder also has the **ToolManagerIQ.exe** file that starts the software. Using any of these will launch the standalone version of ToolManagerIQ™.



The integrated version will add a new icon (3) to the **Commands Toolbar** inside of GibbsCAM. It can be fully customized like other GibbsCAM commands, including repositioning, icon shrinking, and text removal. Using the command will launch the integrated version of ToolManagerIQ™.

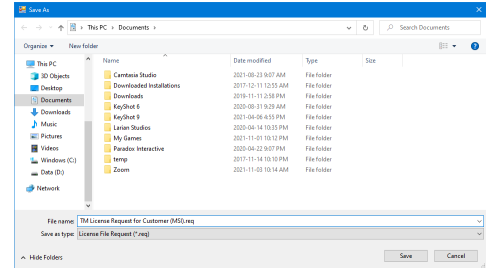


If either version is launched without a license, the same **License Request** window (4) will appear. The form must be filled out to request a license. A 14-day trial is available, or a permanent license can be purchased. A **License Tool** (5) launcher can also be found in the Start menu location (2), which has a **License Request** button (6) for bringing the same window up.

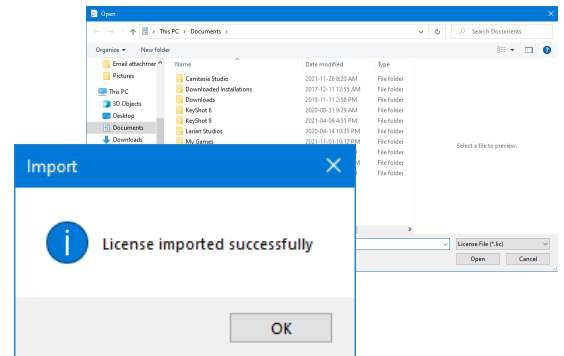


Licensing & First Launch

Once the form is filled out the information can be saved (7) as a **Request** (.REQ) file. Send that file to us at support@toolmanageriq.com to get the process started. After the formalities are completed, a **License** (.LIC) file will be delivered to the provided email.



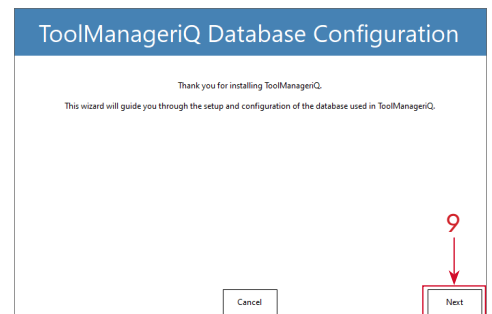
When the **License** (.LIC) file is received it can be dragged and dropped onto the **License Request** window (4). If using the **License Tool** (5) there is an **Import License** button (8) that opens a window to browse for the **License** file. A message will be displayed to confirm the license import was successful.



When ToolManagerIQ™ is started again it should validate the license and attempt to launch the software.

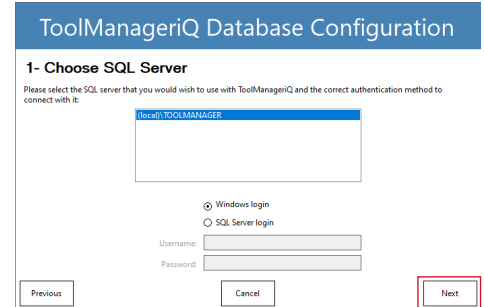


If an SQL server has not been defined then the **Database Configuration Wizard** will open before ToolManagerIQ™ starts. It will create a server and database for the software to use. Press **Next** (9) to start the process.



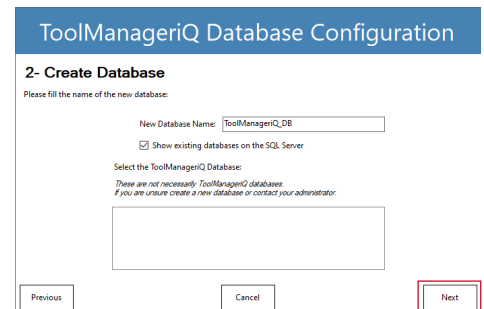
SQL Database Configuration

An SQL server can be chosen on the first page, with optional login details. A local ToolManagerIQ™ server will be added automatically for convenience. Press **Next (10)** when finished.



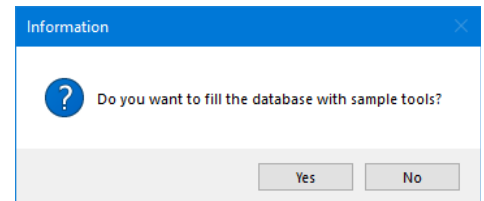
10

The following page is where a new database can be named, or a previously existing one is selected. Use the **Next (11)** button to continue.

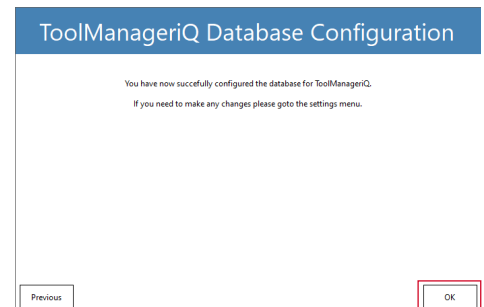


11

We supply a large selection of sample tools, holders, and fixtures. It will ask whether to install them into the database or not. If **No** is selected, the **Database Back-up (.BAK)** file can still be used to load them at any time.



When it is finished, press **OK (12)** to close the Wizard. The ToolManagerIQ™ software will then connect to the SQL database and open normally. Please see the following operating instructions on how to use the software now that it is configured properly.



12

Uninstalling

ToolManagerIQ™ can be uninstalled from the **Apps, Programs & Features** section in Windows, or by running the uninstaller executable in the TMIQ directory. After confirming the request it will remove the majority of the software. It will leave the license and setup information behind so that they can be used if ToolManagerIQ™ is installed again. SQL must be uninstalled separately, but doing so will delete the contents of any database associated to it.

