




# Tool Manager<sup>iQ</sup><sup>™</sup>

The Fully Integrated TDM Solution for  GIBBSCAM

**TMiQ<sup>™</sup> v2.5 User Manual for  
GibbsCAM2022/Standalone**

**Windows 10  
Intel Compatible Processor 1.4GHz/2GHz**

**User Manual Version 1.0**

## Table of Contents

### Installation Instructions

<a href="#">Install ToolManagerIQ™</a>	1
<a href="#">How to Launch Standalone &amp; Integrated Versions</a>	5
<a href="#">Licensing</a>	6
<a href="#">ToolManager Database Configuration SQL Server Setup</a>	7
<a href="#">Uninstall ToolManagerIQ™</a>	8

### Operating Instructions

<a href="#">Introduction</a>	9
<a href="#">Standalone vs Integrated</a>	10
<a href="#">Launching Standalone Version</a>	10

#### Settings

• <a href="#">License Tab</a>	11
• <a href="#">Connection Tab</a>	12
• <a href="#">Directories Tab</a>	13
• <a href="#">Application Tab</a>	14
• <a href="#">Language Tab</a>	14
• <a href="#">Backup Tab</a>	14
• <a href="#">About Tab</a>	15

#### Sections

• <a href="#">Tools</a>	16
• <a href="#">Holder</a>	17
• <a href="#">Holder Class</a>	17
• <a href="#">Fixture</a>	18
• <a href="#">Fixture Assembly</a>	18
• <a href="#">Supplier</a>	19

#### Adding Items Manually

• <a href="#">Holder Class</a>	20
• <a href="#">Supplier</a>	21
• <a href="#">Tools</a>	22
• <a href="#">Holder</a>	24
• <a href="#">Fixture</a>	25
• <a href="#">Fixture Assembly</a>	26

<a href="#">Deleting Items</a>	27
--------------------------------	----

<a href="#">Duplicating Items</a>	27
-----------------------------------	----

#### Grouping

• <a href="#">Group Tab</a>	28
• <a href="#">Classification Tab</a>	29

## Table of Contents

### List View Functions

• <a href="#">Selecting Items</a> .....	30
• <a href="#">Display/Hide Columns</a> .....	31
• <a href="#">Sort Column</a> .....	31
• <a href="#">Reorder Columns</a> .....	31
• <a href="#">Filter/Search</a> .....	33
• <a href="#">Context Menu</a> .....	33

<a href="#">Print</a> .....	34
-----------------------------	----

<a href="#">Export</a> .....	35
------------------------------	----

<a href="#">Launching Integrated Version</a> .....	37
--	----

### Import From GibbsCAM

• <a href="#">Tools</a> .....	37
• <a href="#">Holder</a> .....	38
• <a href="#">Fixture</a> .....	39

### Export To GibbsCAM

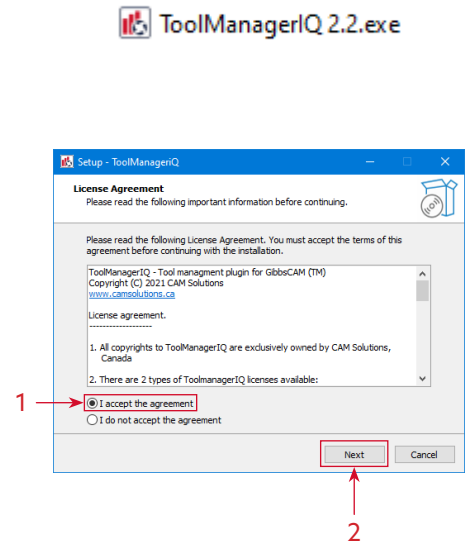
• <a href="#">Tools</a> .....	40
• <a href="#">Holder</a> .....	40
• <a href="#">Fixture</a> .....	41
• <a href="#">Fixture Assembly</a> .....	41

<a href="#">Update Tool In GibbsCAM</a> .....	41
---	----

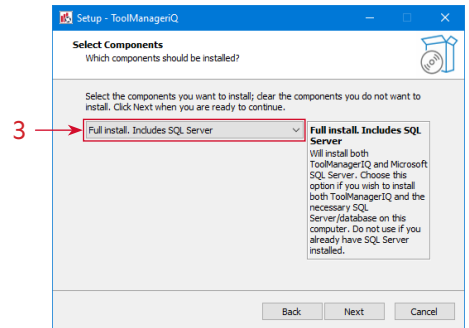
## Installation Instructions

Start by downloading the installer from [www.toolmanageriq.com](http://www.toolmanageriq.com). Run the executable and accept if it asks for permission to install. Both standalone and integrated versions use the same installer.

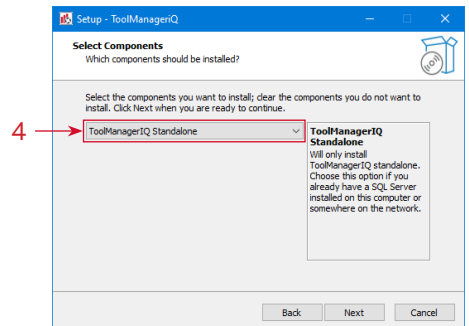
The installer should detect the proper language from your Windows settings. The license agreement must be accepted before moving on. Read the agreement and select the **I accept the agreement** radio button (1), then press **Next** (2).



Selecting what to install will depend on what is there already. If nothing has been installed then **Full Install** (3) can be used. It will install both ToolManagerIQ™ versions, along with the SQL software.

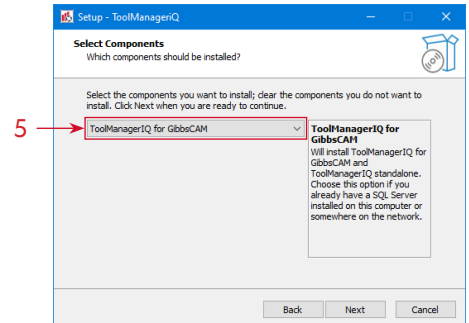


The components can also be installed separately. This includes the standalone version of ToolManagerIQ™ (4) that does not need GibbsCAM to run.

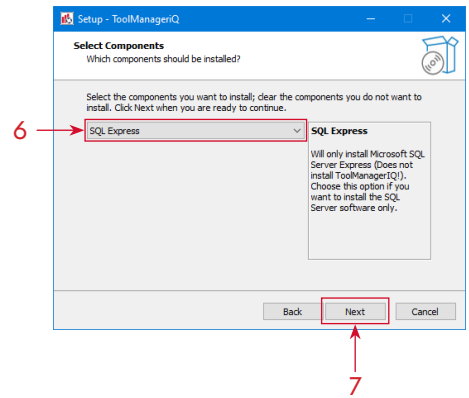


## Installation Instructions

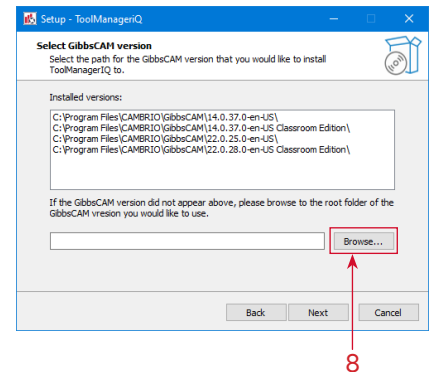
The ToolManagerIQ™ version that is integrated into GibbsCAM can be selected (5), but the standalone version will also be installed.



The SQL database (6) is the final option to install by itself. Select one of the options and press the **Next** button (7) to continue.

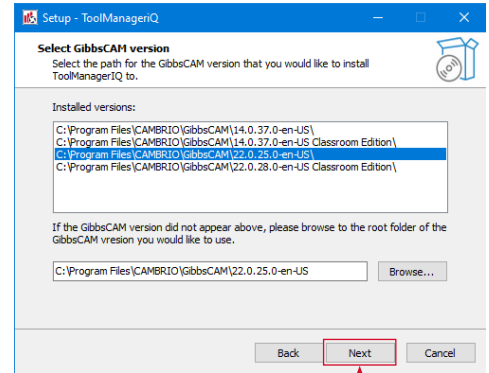
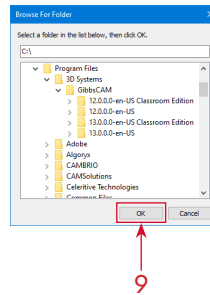


If the integrated version is being installed it will ask the user to select the GibbsCAM version for ToolManagerIQ™ to run in. The list should show all recent compatible GibbsCAM installations that exist on the system. GibbsCAM versions 12 and 13 will not be found because of a folder name change. In that case, you must use the **Browse** button (8) to find the directory.

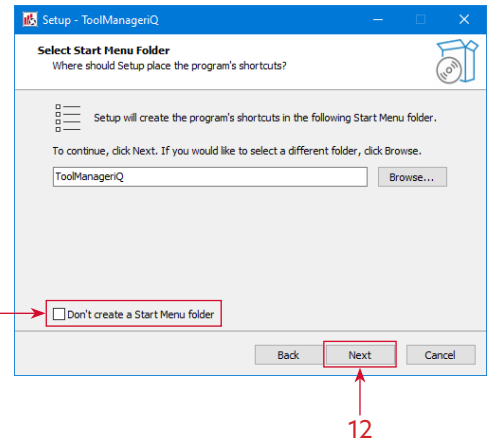


## Installation Instructions

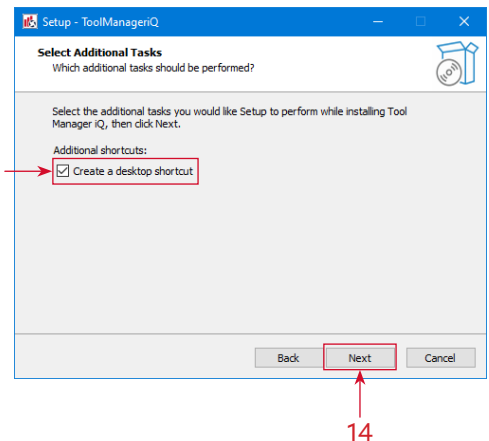
The **Browse** button will let the user navigate to the desired GibbsCAM installation folder. Once the proper one is selected the **OK** button (9) can be pressed, followed by **Next** (10).



A start menu entry will be created with the given name, unless **Don't create a Start Menu folder** is selected (11). Press **Next** (12) to continue.

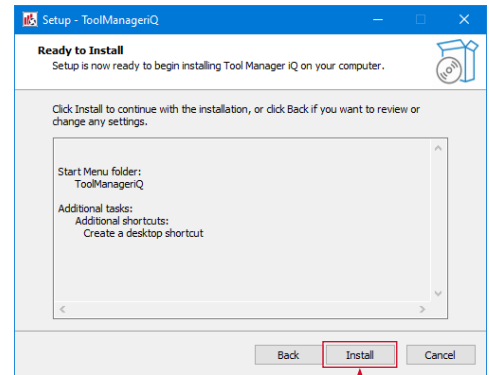


A desktop shortcut will be created by default that can be used to launch the standalone version of ToolManagerIQ™. If the **Create a desktop shortcut** option (13) is deselected the software will have to be launched from the Start menu. Use the **Next** button (14) to proceed.



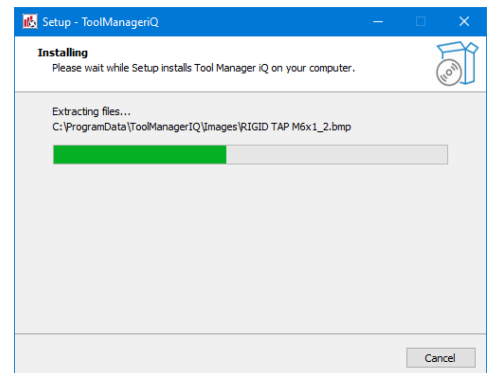
## Installation Instructions

A review of the selections will be shown on the next page. Press the **Install** button (15) to start the process.

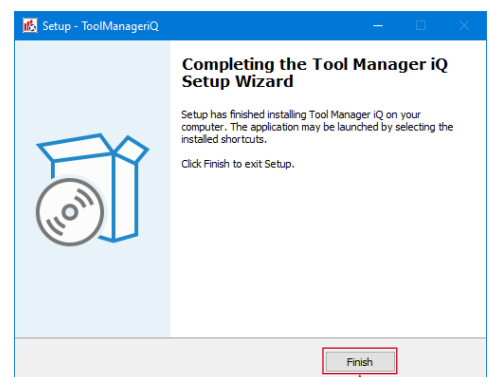


15

The installer will display its progress as it performs the task. The time it takes will depend on the computer on which it is installed.



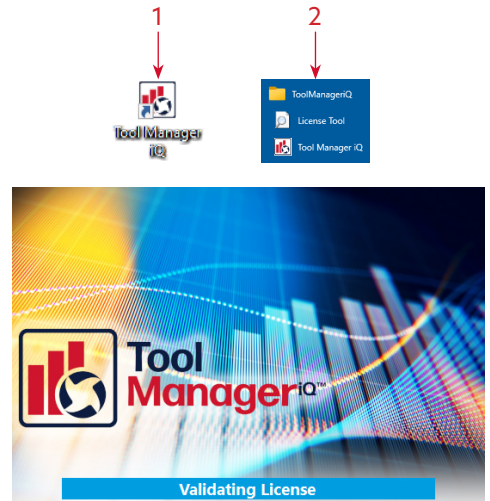
After the installation is complete, pressing the **Finish** button (16) will close the dialog. If there is already an active license available then ToolManagerIQ™ can be launched. If the software still needs to be registered, please refer to the following **Licensing Section**.



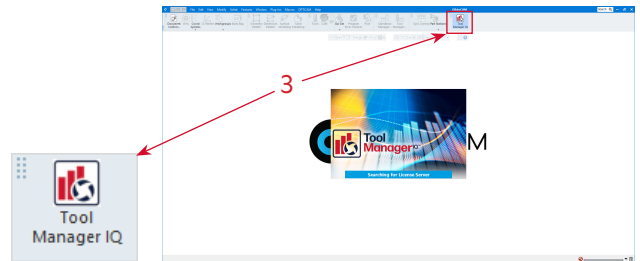
16

## Licensing & First Launch

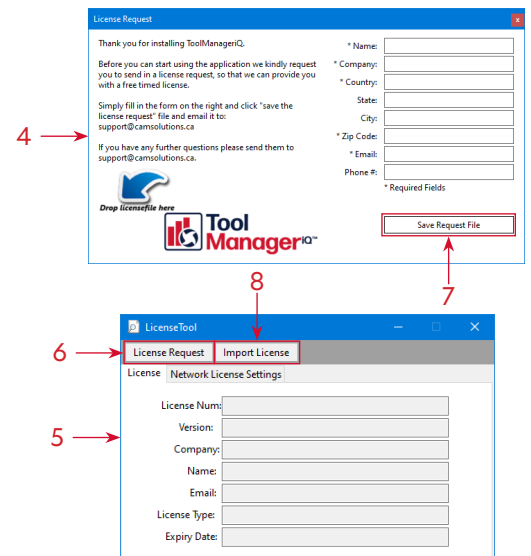
The method used to launch the ToolManagerIQ™ software depends on what version is required. The standalone version will have a desktop shortcut (1) and Start menu entry (2) if they were created during installation. The installation folder also has the **ToolManagerIQ.exe** file that starts the software. Using any of these will launch the standalone version of ToolManagerIQ™.



The integrated version will add a new icon (3) to the **Commands Toolbar** inside of GibbsCAM. It can be fully customized like other GibbsCAM commands, including repositioning, icon shrinking, and text removal. Using the command will launch the integrated version of ToolManagerIQ™.



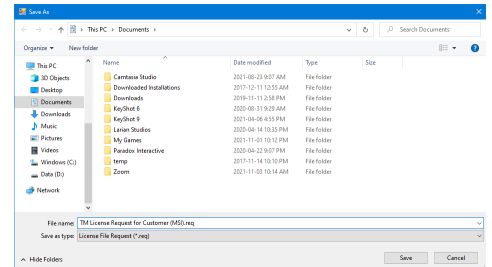
If either version is launched without a license, the same **License Request** window (4) will appear. The form must be filled out to request a license. A 14-day trial is available, or a permanent license can be purchased. A **License Tool** (5) launcher can also be found in the Start menu location (2), which has a **License Request** button (6) for bringing the same window up.



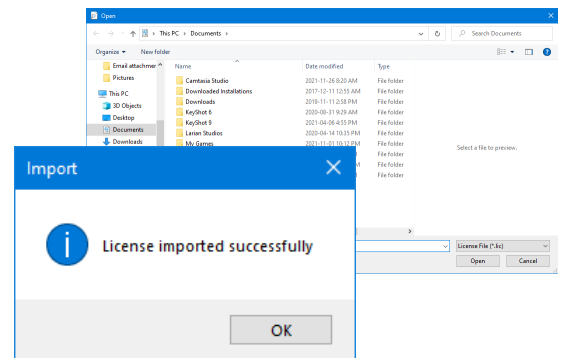


## Licensing & First Launch

Once the form is filled out the information can be saved (7) as a **Request** (.REQ) file. Send that file to us at support@toolmanageriq.com to get the process started. After the formalities are completed, a **License** (.LIC) file will be delivered to the provided email.



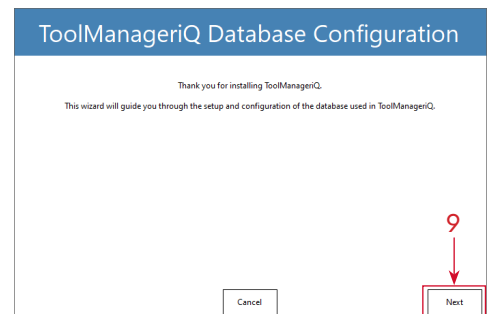
When the **License** (.LIC) file is received it can be dragged and dropped onto the **License Request** window (4). If using the **License Tool** (5) there is an **Import License** button (8) that opens a window to browse for the **License** file. A message will be displayed to confirm the license import was successful.



When ToolManagerIQ™ is started again it should validate the license and attempt to launch the software.

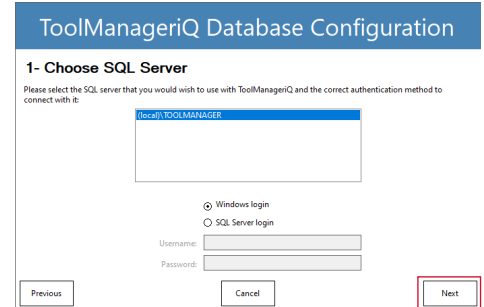


If an SQL server has not been defined then the **Database Configuration Wizard** will open before ToolManagerIQ™ starts. It will create a server and database for the software to use. Press **Next** (9) to start the process.

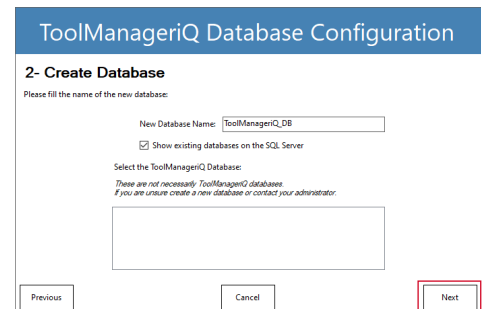


## SQL Database Configuration

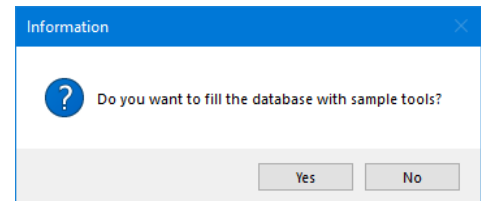
An SQL server can be chosen on the first page, with optional login details. A local ToolManagerIQ™ server will be added automatically for convenience. Press **Next (10)** when finished.



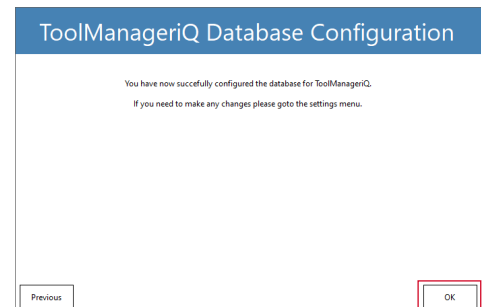
The following page is where a new database can be named, or a previously existing one is selected. Use the **Next (11)** button to continue.



We supply a large selection of sample tools, holders, and fixtures. It will ask whether to install them into the database or not. If **No** is selected, the **Database Back-up (.BAK)** file can still be used to load them at any time.

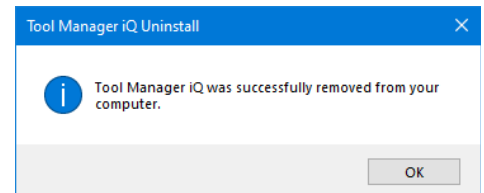
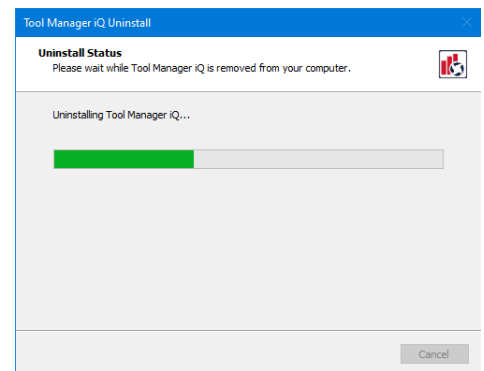
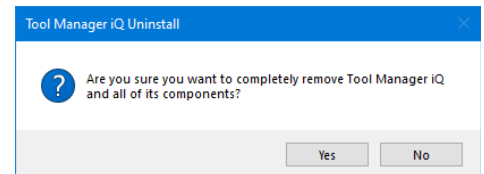


When it is finished, press **OK (12)** to close the Wizard. The ToolManagerIQ™ software will then connect to the SQL database and open normally. Please see the following operating instructions on how to use the software now that it is configured properly.



## Uninstalling

ToolManagerIQ™ can be uninstalled from the **Apps, Programs & Features** section in Windows, or by running the uninstaller executable in the TMIQ directory. After confirming the request it will remove the majority of the software. It will leave the license and setup information behind so that they can be used if ToolManagerIQ™ is installed again. SQL must be uninstalled separately, but doing so will delete the contents of any database associated to it.



## Starting T*MiQ*™

### SYSTEM REQUIRMENTS

Windows 10 OS

Intel Compatible Processor CPU with 1.4GHz (2GHz recommended)

GibbsCAM v13, v14 or 2022 for Integrated Version

### KEY FEATURES OF TOOLMANAGER*iQ*™

Share information over a SQL database so the entire team can see and make changes.  
Manage tools, holders, fixtures, and related supplier information effortlessly.

- Standalone users are able to add and edit items
- Integrated users can import, export items directly to and from GibbsCAM

While both the standalone and integrated ToolManager*iQ*™ versions appear and function the same way, there are some exclusive functionalities within the integrated version.

This manual will highlight the mutual functionalities first, followed by all exclusive functions found only in the Integrated T*MiQ* version.

Let's begin!

## TMiQ™ Operation Instructions

Launching both standalone and integrated versions is covered on page 5. The standalone version has two possible ways; through a desktop shortcut (1) and a start menu entry (2).



The standalone version has pull-down menus at the top (3).

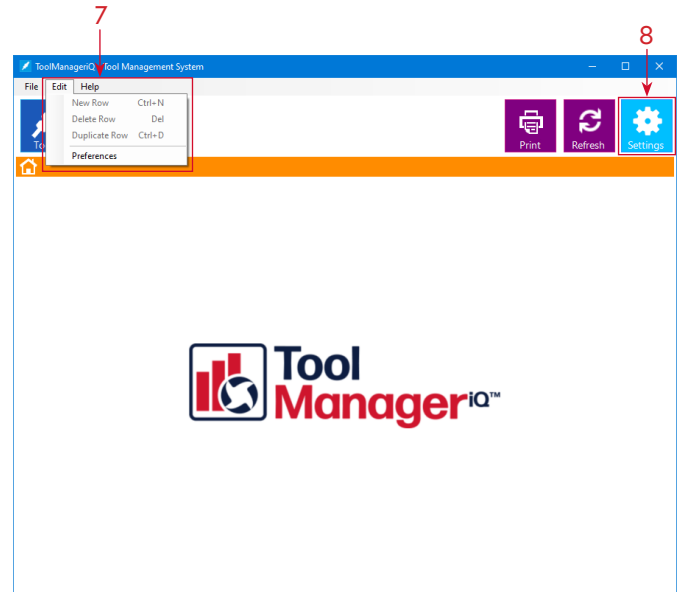
In both versions, three upper-left buttons (4) access **Tools**, **Fixtures** and **Supplier** sections. The remaining three upper-right buttons (5) access **Additional Functions** and **Settings**.



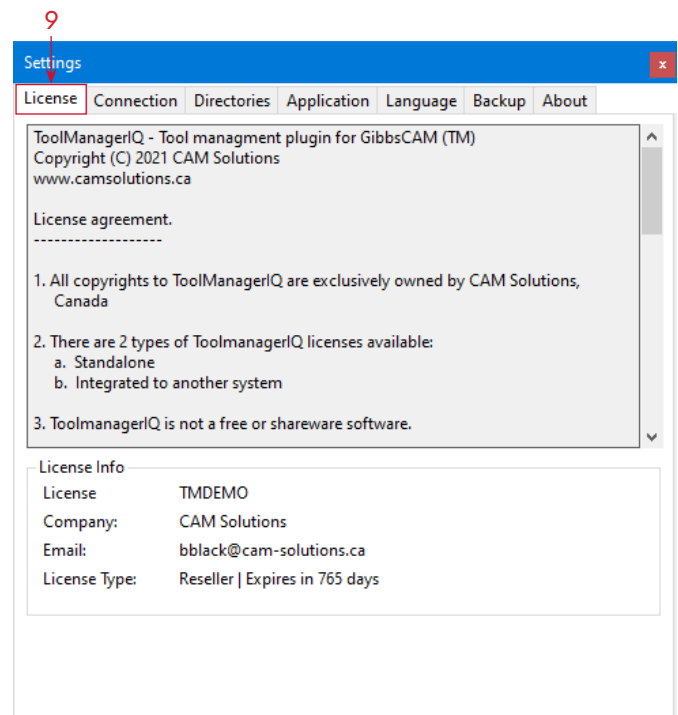
The **Home** button (6) always returns back to this **Home Page**. Each of these items are covered in this manual.

## TMiQ™ Settings

We will start with the numerous ToolManagerIQ™ **Settings** and **Preferences**. They can be accessed in the **Edit** menu (7), or by using the **Settings** button (8).

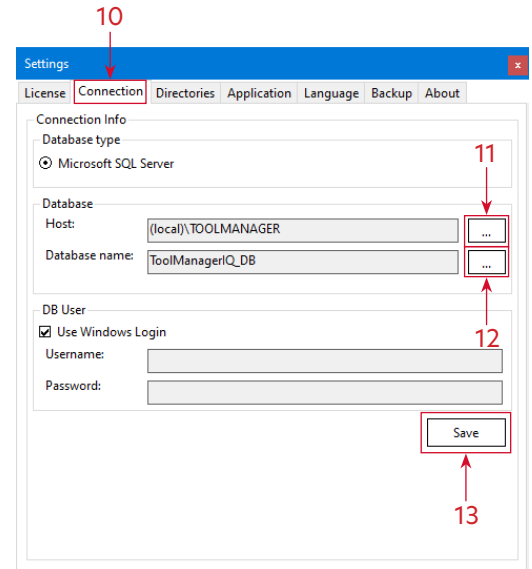


The **License** tab (9) shows the License Agreement and current license information. For information on acquiring, importing or activating a license see page 5 in the installation section.



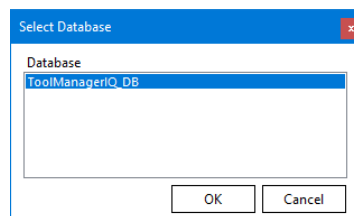
## TMiQ™ Settings

The **Connection** tab (10) has the SQL database information in it, including the Host Server, database name, and login details.

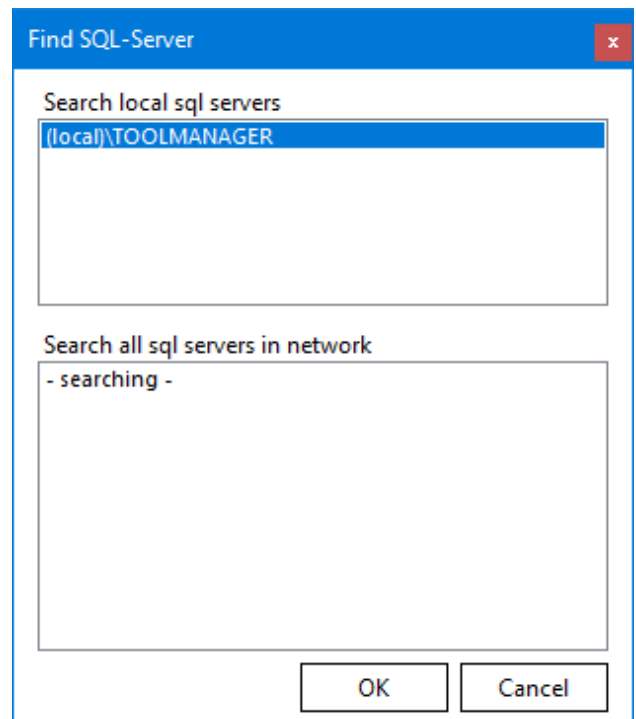
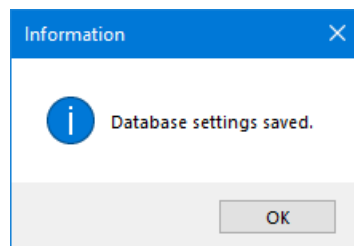


We recommend not changing the database, but the **upper ellipsis** button (11) can be used to select another SQL Host Server.

Press the **lower ellipsis** button (12) to select a different database on the host server.

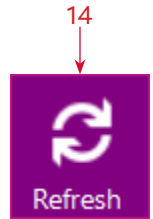


Pressing the **Save** button (13) will accept any changes that have been made.

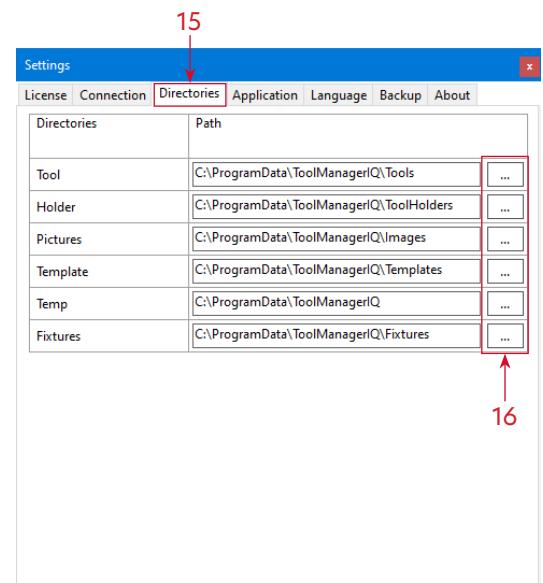


## TMiQ™ Settings

The **Refresh** button (14) at the top of the main window can be used anytime to update ToolManagerIQ™ with the current data on the SQL server. This can be especially useful when multiple users and computers are working on the same database at the same time. The **Refresh** button will update the database, as well as the list view, sorting order, etc. Although the system will eventually refresh automatically, **Refresh** can be used to be sure the latest information is shown.



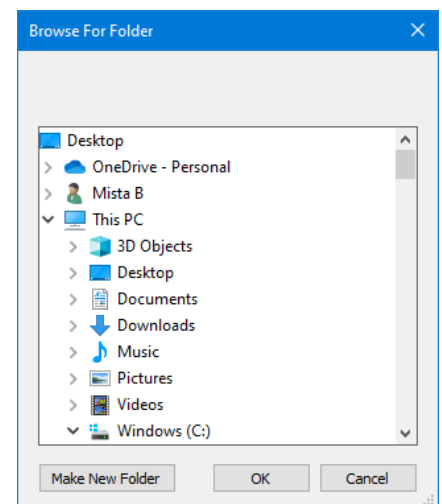
The **Directories** tab (15) contains the directories for saving specific supporting file types like pictures, DXFs and solids that are used to define tools, holders and fixtures. The system stores everything on the local hard drive by default.



Press the **ellipsis** (16) beside the appropriate one to change the directory.

It can be set to a different folder on the Local System, or a location on the **Server** can be selected.

Storing the data on a **Server** is recommended if multiple users want to share the same Database between different installations across the Network.



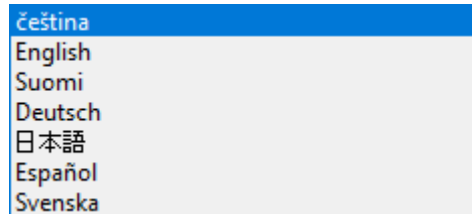


## TMiQ™ Settings

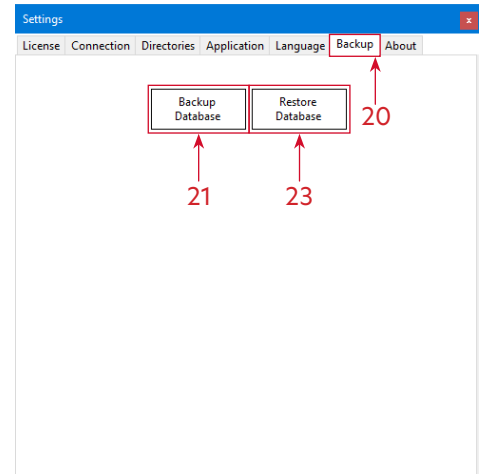
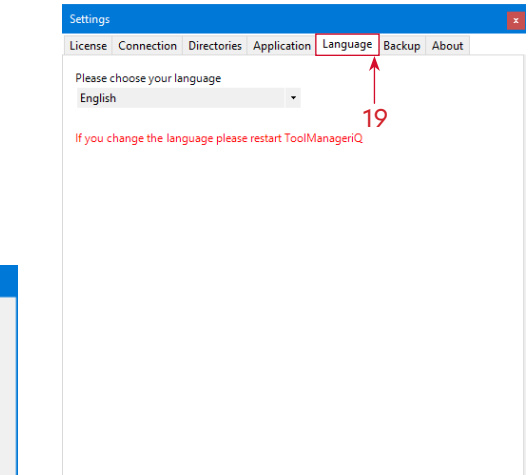
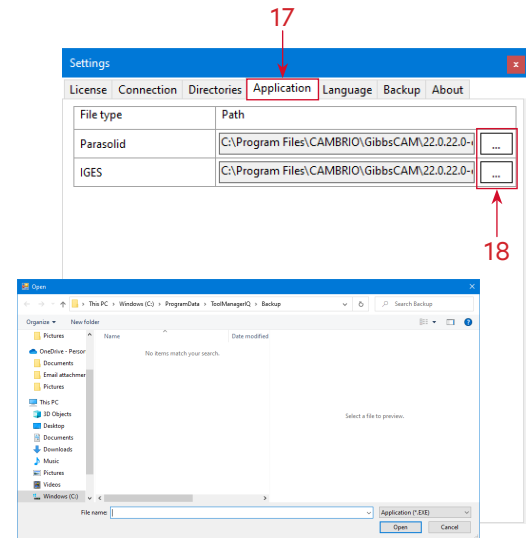
The **Application** tab (17) links to the software that will be used to open solids like Tool Holders and Fixture Models. There is a separate selection for **IGES** and **Parasolid** file types. The default program is GibbsCAM.

Press the **Ellipsis** button (18) beside the appropriate file type to change the selection. It is not recommended.

The **Language** tab (19) is used to set the language for the software to use. ToolManagerIQ™ must be restarted for the change to take effect.

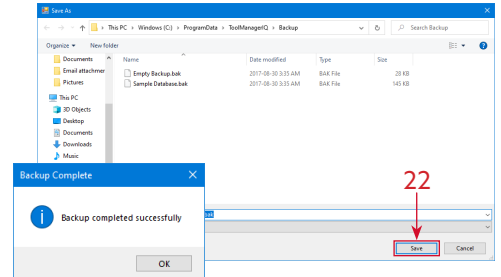


The **Backup** tab (20) can be used to save and load the Database items.

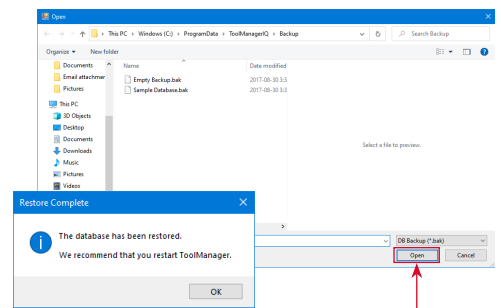


## TMiQ™ Settings

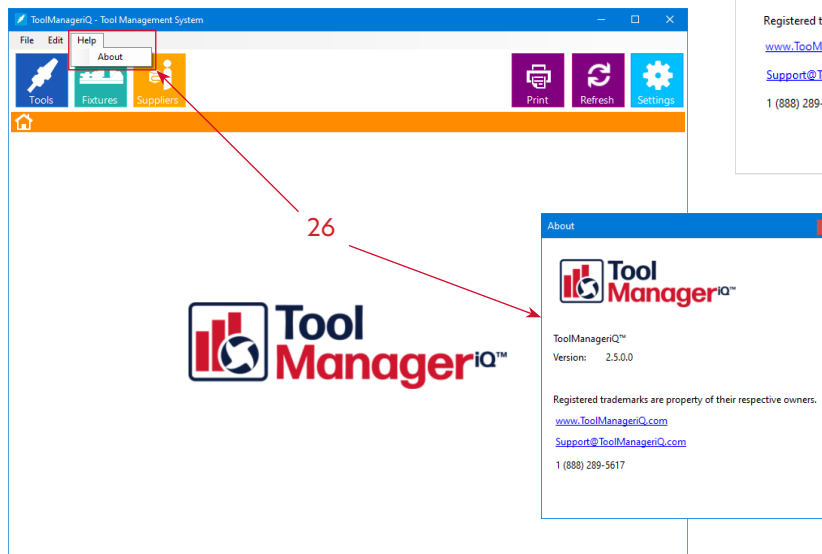
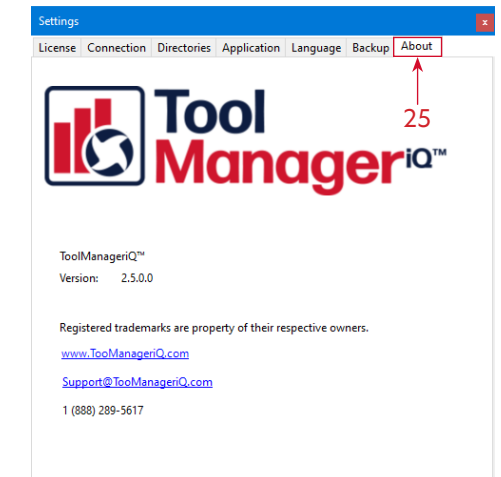
Press the **Back-up Database** button (21) to save and export the current database as a Back-up (.BAK) file. Making regular back-ups can help avoid loss of data in the event of a system crash or something similar. Pressing **Save** (22) will show a confirmation that the Database has been backed up



Press the **Restore Database** button (23) to load a saved **Database Back-up** (.BAK) file. Selecting a file and pressing **Open** (24) will show a confirmation and suggest that ToolManagerIQ™ be restarted. Loading a **Back-up** (.BAK) file will replace all information on the database, so make sure any other important items that already exist are also backed-up before they are overwritten.

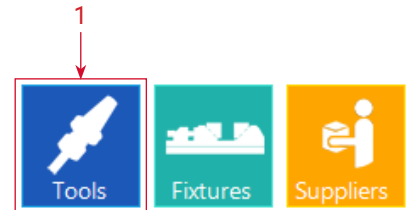


The **About** tab (25) displays information like the current version of ToolManagerIQ™ that is installed. **About** can also be found in the **Help** menu (26).

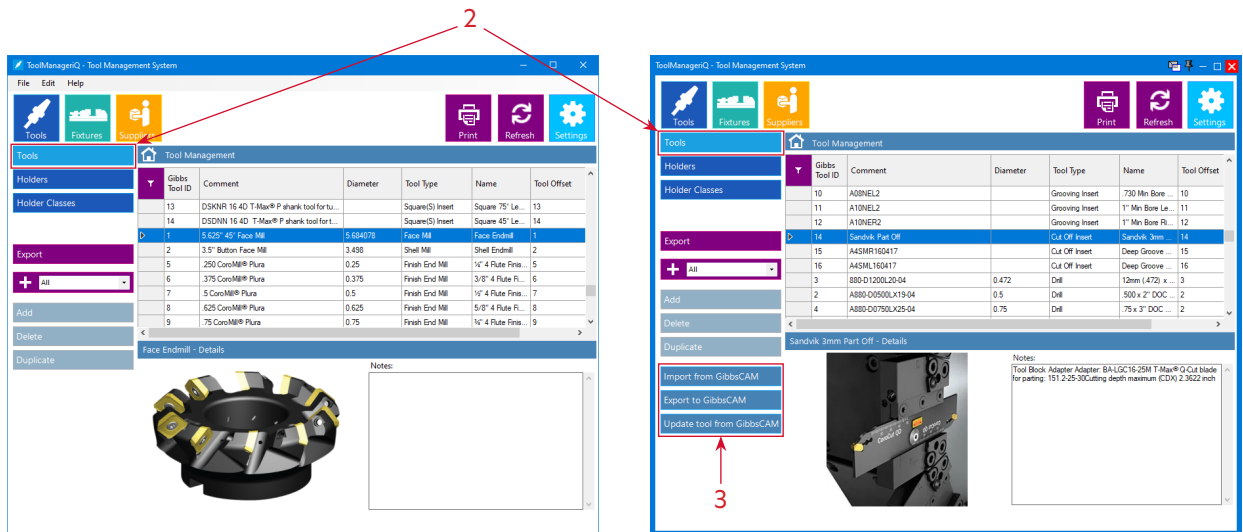


## The TMIQ™ Tool Sub-Section

ToolManagerIQ™ has three main sections for managing different types of items. The first is the **Tools** section that can be accessed with the square button (1) at the top of the main window. When the button is pressed three sub-sections will appear listed below it.

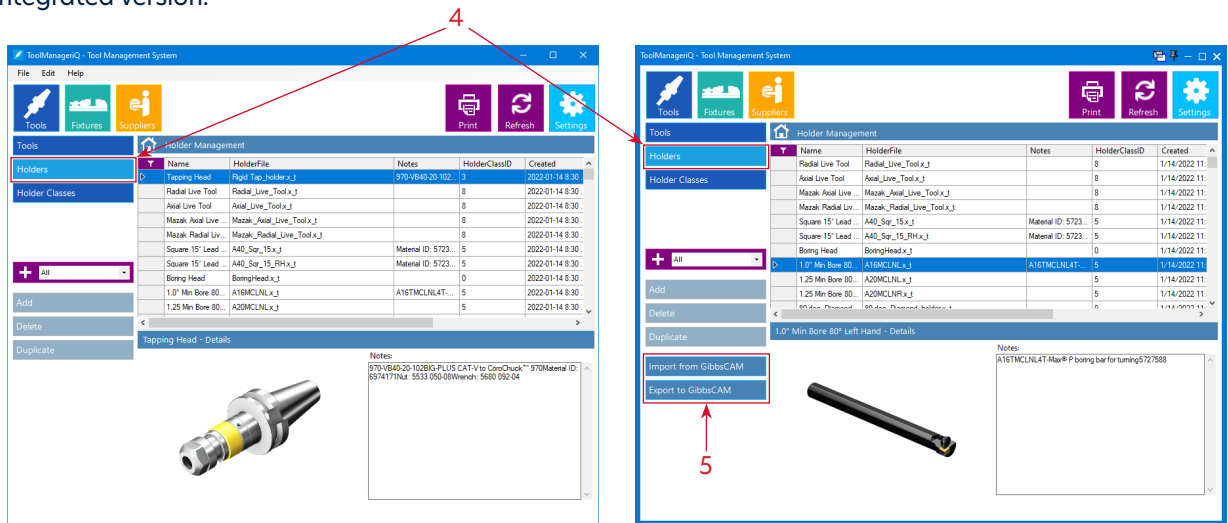


The **Tools** sub-section (2) is used for individual tools, and optionally, tool assemblies that contain a tool paired with a standard holder. Tools with no holder applied can be added independently. If it has a standard GibbsCAM Holder then a tool assembly can be created with the standard **Tool Holder** identified in the Tool Set-Up dialog. If the Holder is not standard it will be added to the Holder sub-section described next, but will still stay associated with the Tool. The only difference between standalone and integrated here are the **Import from GibbsCAM**, **Export to GibbsCAM**, and **Update tool in GibbsCAM** buttons (3).

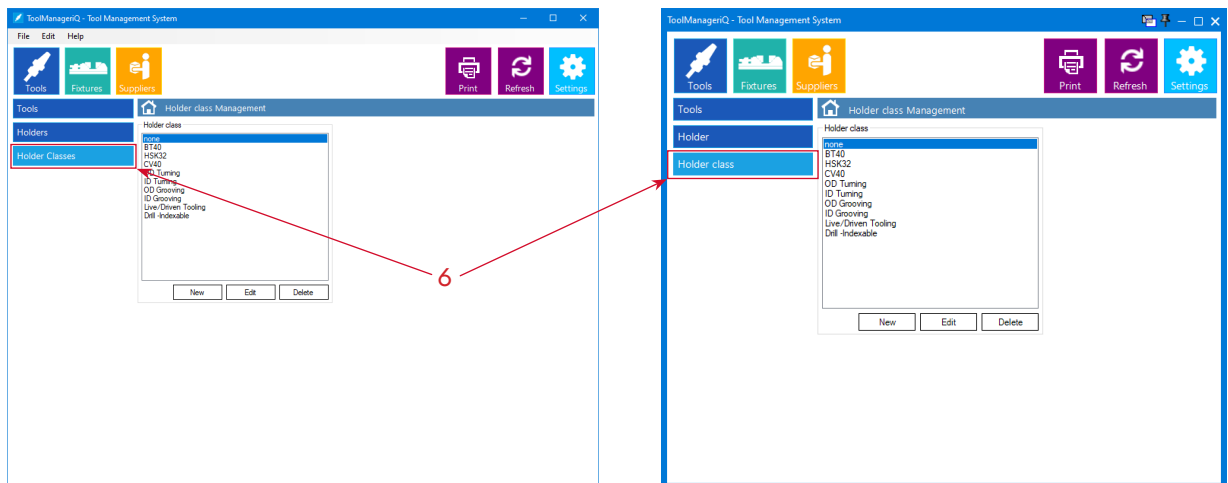


## The TMIQ™ Holder and Holder Class Sub-Sections

The **Holder** sub-section (4) is used for **Tool Holders**. **Holder**s use solid models in **IGES** or **Parasolid** format to define their shape. We suggest using **Parasolid** if possible. The **Import from GibbsCAM** and **Export to GibbsCAM** buttons (5) are the only extra additions in the integrated version.

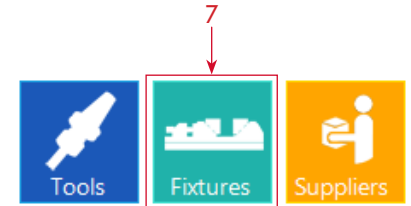


The **Holder Class** sub-section (6) is used to add different classes of **Tool Holders**. Whatever is added to the list can be applied to specific **Tool Holders**. This sub-section is the same in both standalone and integrated versions.

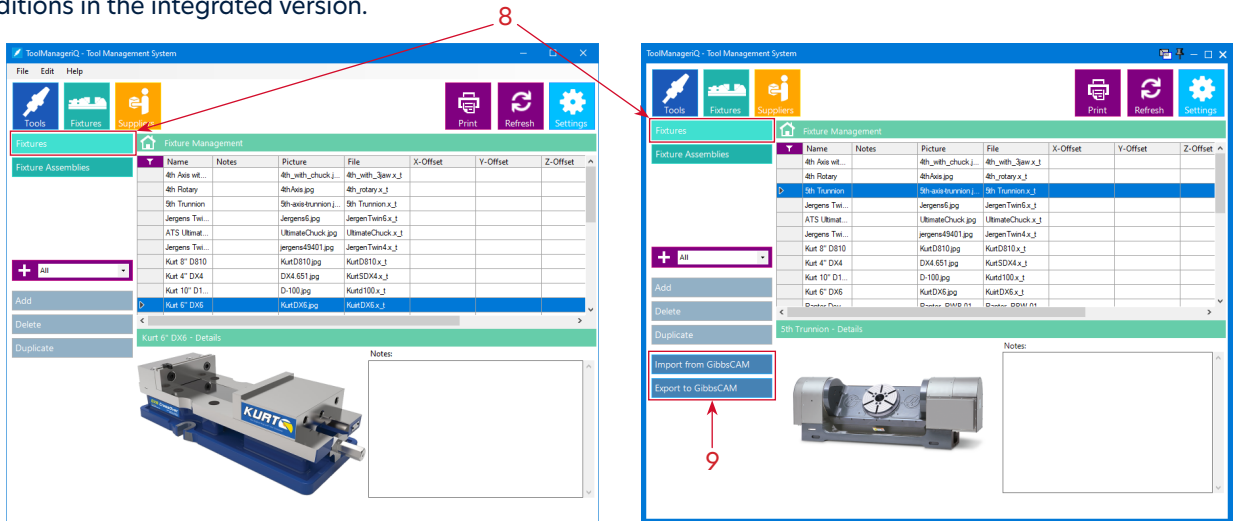


## The TMIQ™ Fixture and Fixture Assembly Sub-Sections

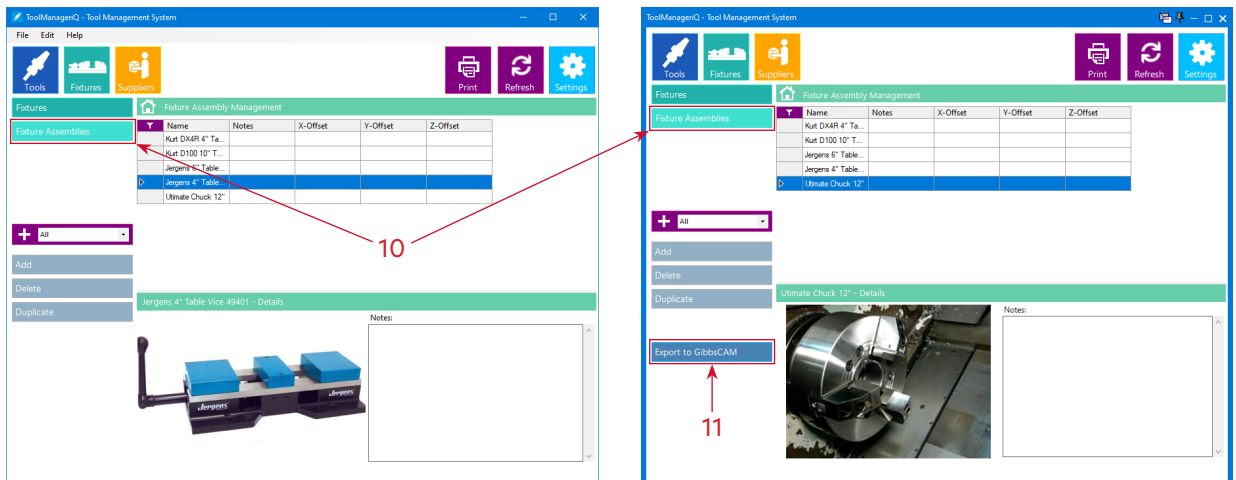
The second main section can be found using the **Fixtures** button (7). It has two sub sections.



The **Fixture** sub-section (8) is used for independent fixture components. **Fixtures** also use solid models in **IGES** or **Parasolid** format to define their shape. We suggest using **Parasolid** if possible. The **Import from GibbsCAM** and **Export to GibbsCAM** buttons (9) are the only extra additions in the integrated version.

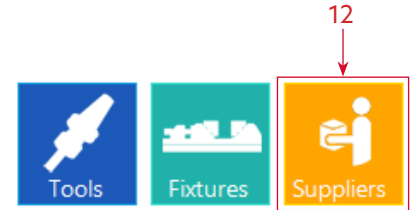


The **Fixture Assembly** sub-section (10) is used to group fixture components that go together. Those components will also need to be in the **Fixture** sub-section (8) shown before this. The only addition to the integrated version is the **Import to GibbsCAM** button (11).

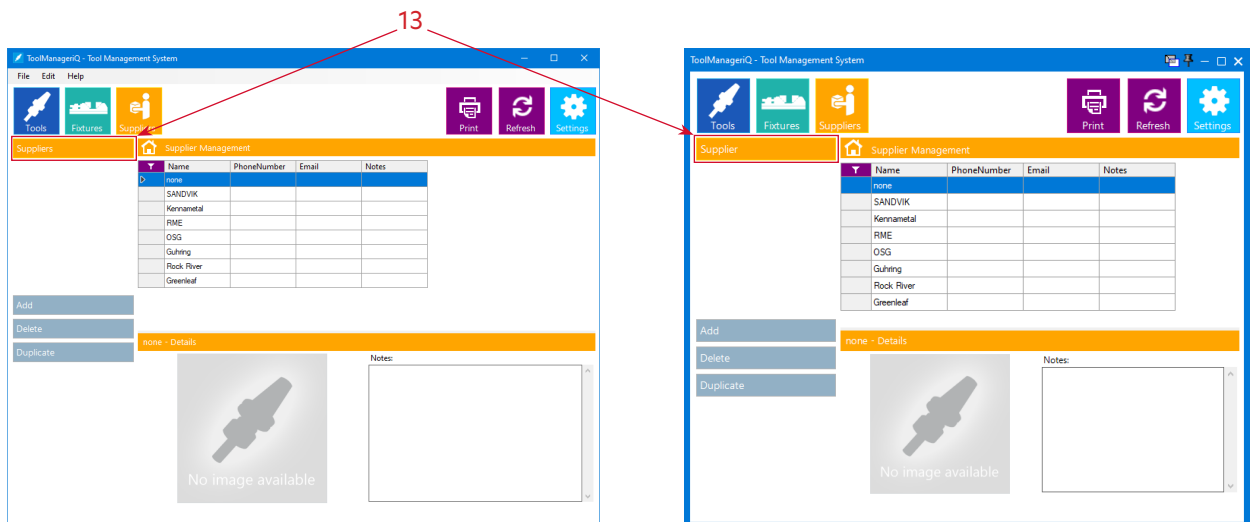


## The TMIQ™ Supplier Sub-Section

The third main section can be found using the **Suppliers** button (12).



The **Supplier** sub-section (13) is the only one available so it will be selected automatically. It is used to keep supplier information that can be applied to specific tools. When the time comes to reorder an item, all of the relevant contact information will be at the ready. This sub-section is the same in both standalone and integrated versions.



Adding to Sub-Sections in TMIQ™

When adding items to a sub-section it must be done manually in the standalone version of ToolManagerIQ™. We will start with the **Holder Class** sub-section that has **New**, **Edit** and **Delete** buttons (1), since it works a bit different from the other sub-sections.

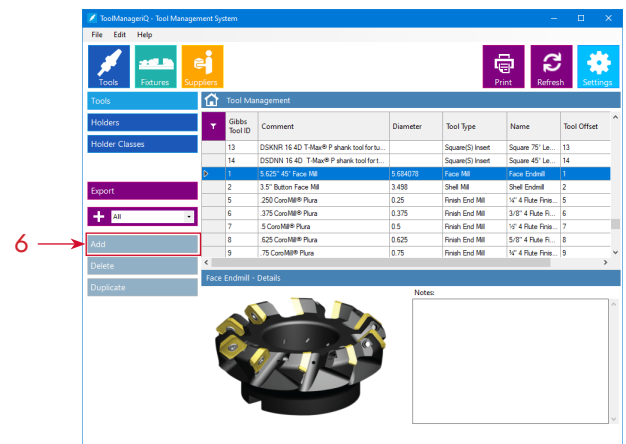
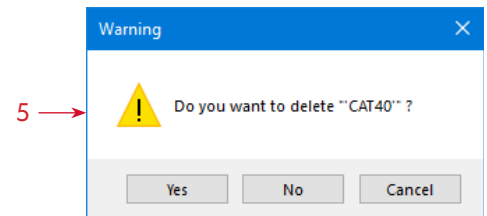
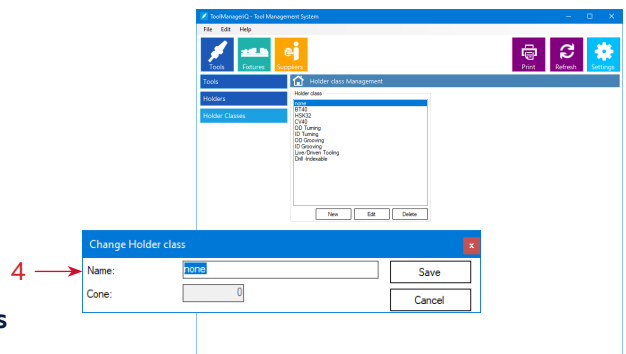
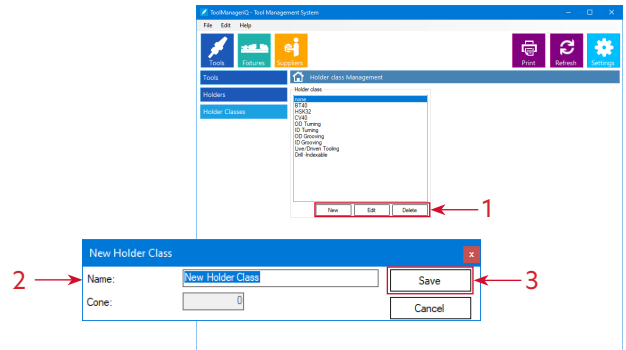
Pressing the **New** button will bring up a dialog (2) where a name can be entered.

Pressing the **Save** button (3) will add it to the list.

Pressing the **Edit** button with an existing **Holder Class** selected will bring up the dialog (4) box where it may be edited.

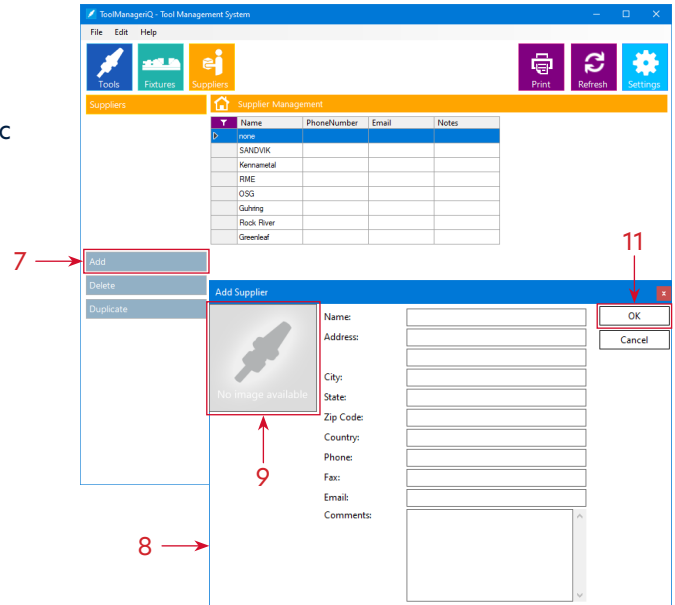
Pressing the **Delete** button with an existing **Holder Class** selected will remove the entry with confirmation (5).

The **Tools**, **Holder**, **Fixture**, **Fixture Assembly**, and **Supplier** sub-sections all use an **Add** button (6) to load things in manually.

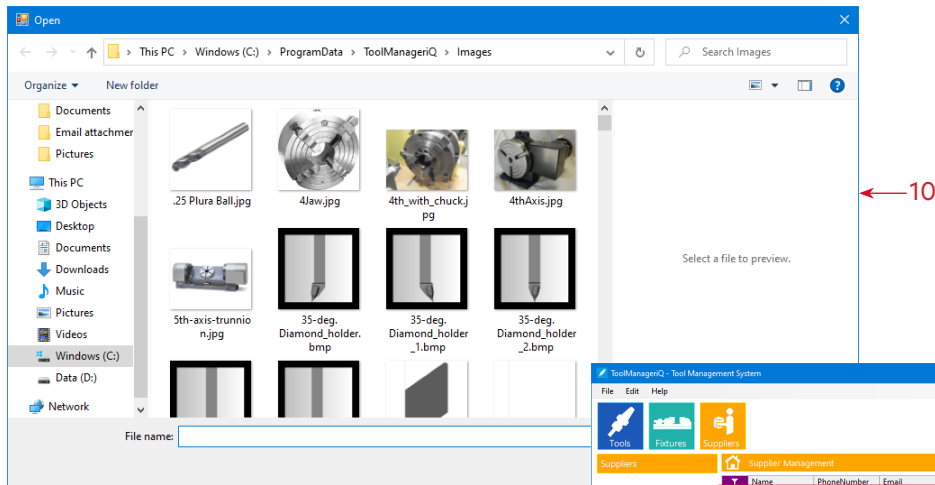


## Adding to the Supplier Sub-Section

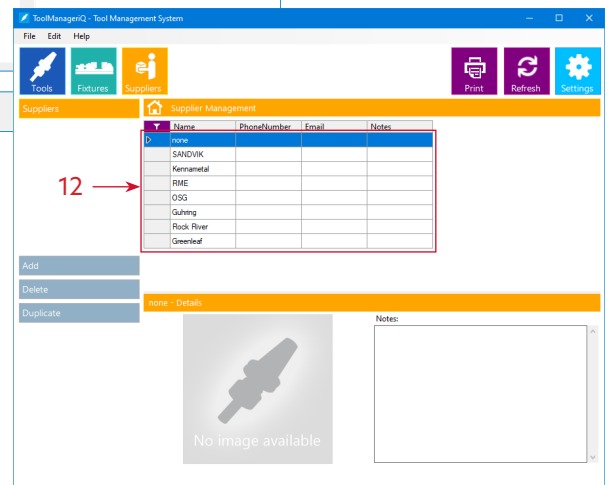
When using the **Add** button (7) in the **Supplier** sub-section it presents a simple dialog (8) with basic information to fill out like company name, location, contact details and comments that can be used when ordering.



Optionally, click on the image box (9) to browse for a picture, like a **Supplier Logo**. The **Pictures Directory** defined in the **Settings** will open by default (10).



With the correct image selected, pressing the **OK** button (11) will add the **Supplier** to the list. The **Supplier Row** (12) can be double-clicked at any time to bring its dialog back-up for edits.

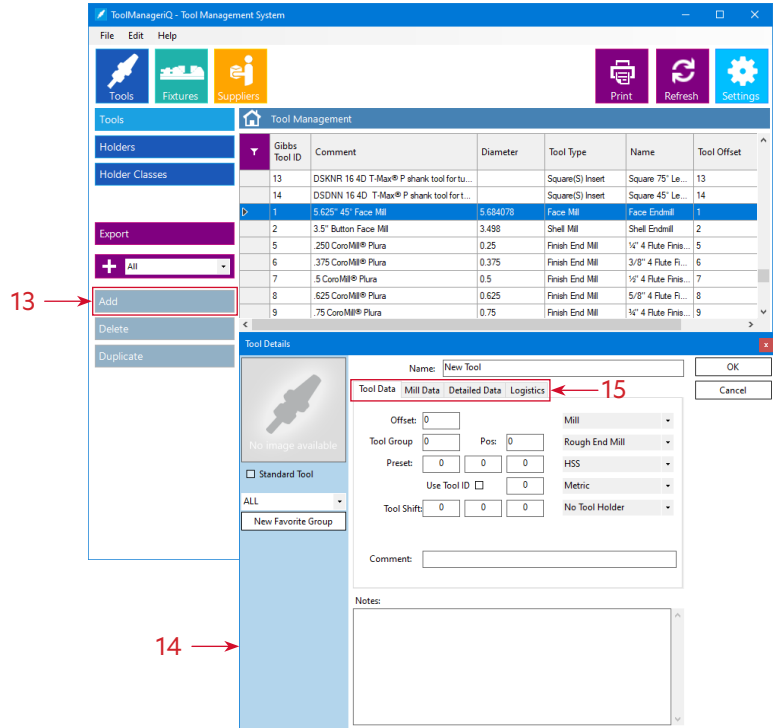




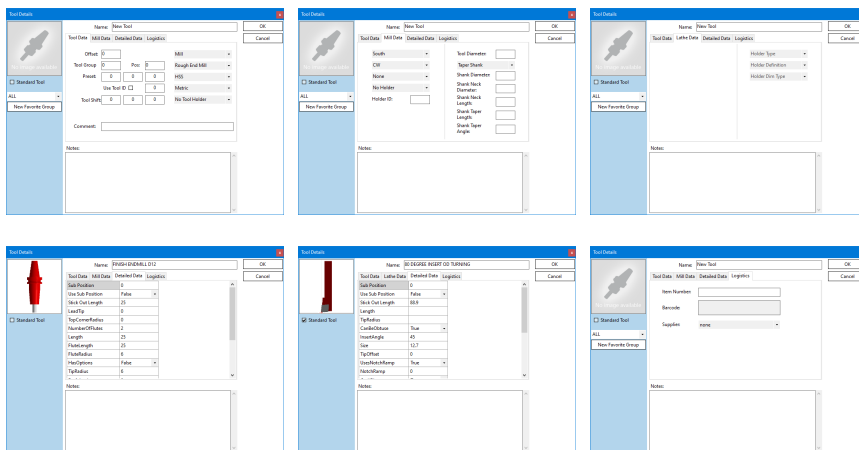
## Adding to the Tools Sub-Section

The **Add** button (13) in the **Tools** sub-section will bring up this dialog (14). There are four main tabs to fill out (15). The options in each tab will change depending on whether it is a Mill or Lathe tool. Many of the parameters correspond to GibbsCAM settings that are available when creating a tool.

In this dialog box (14) some fields can have letters or numbers added, while other fields use **Pull-Down Menus**. Basic math functions can also be calculated in many of the value fields to automatically convert fractions or convert between metric and imperial.



The possible options are shown below.



## The Logistics Tab

The **Logistics** tab (16) has miscellaneous items in it.

If an **Item Number** (17) is entered it will generate a barcode that can be scanned on the monitor or when printed.

The **Supplier** pull-down menu (18) will have all of the brands that exist in the that sub-section, so the appropriate one can be applied to each tool.

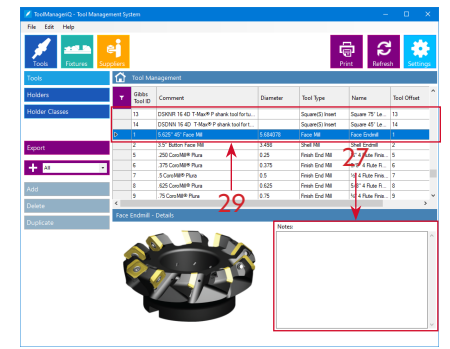
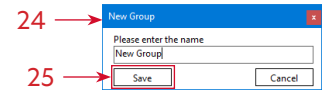
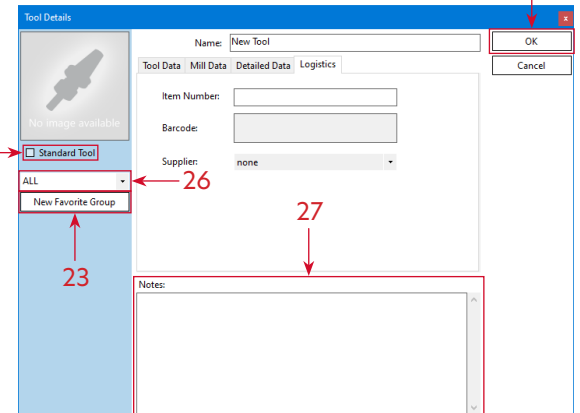
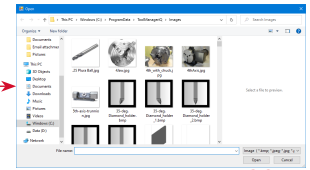
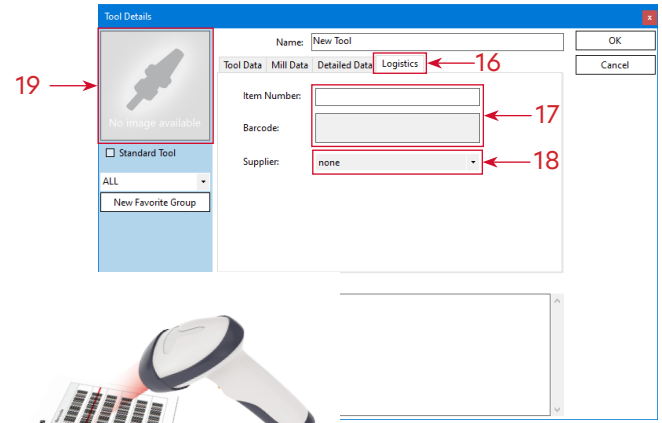
Each tool will also have an image box (19) that can be customized with a picture (20) by clicking it.

Anything added can be identified as a **Standard Tool** (21), meaning it is always available in the shop and does not have to be ordered. Standard Tools can be used over other tools to eliminate having to order, pay or wait for non-standard tools.

Selecting **Standard Tool** (21) makes it easier and faster to identify. A **Standard Tool Column** (22) can display the status of each tool in the list view instead of having to open its dialog.

Pressing the **New Favourite Group** button (23) opens a **New Group** dialog box (24) where a name can be entered. Press the **Save** button (25) to add the **New Group** to the list. The drop down menu (26) can be used to associate the tool to any available **Group**. **Grouping** will be explained further later in this manual.

A **Notes** section (27) contains any additional comments. Pressing the **OK** button (28) will add the tool to the list. A **Tool Row** (29) can be double-clicked any time to bring its dialog back up for edits.



## Adding to the Holder Sub-Section

The **Add** button (30) in the **Holder** sub-section will open this dialog (31) where it can be given a name, and comments can be added in the **Notes** field (32).

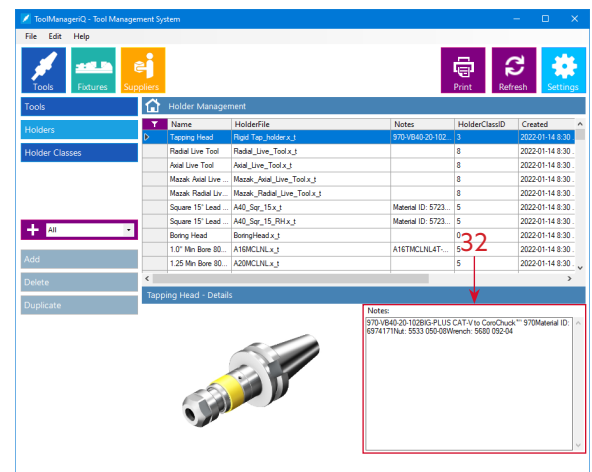
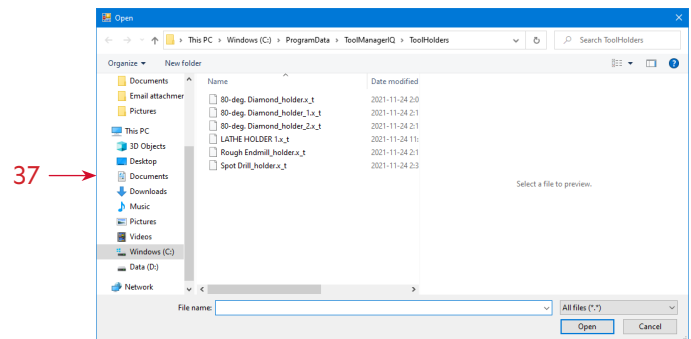
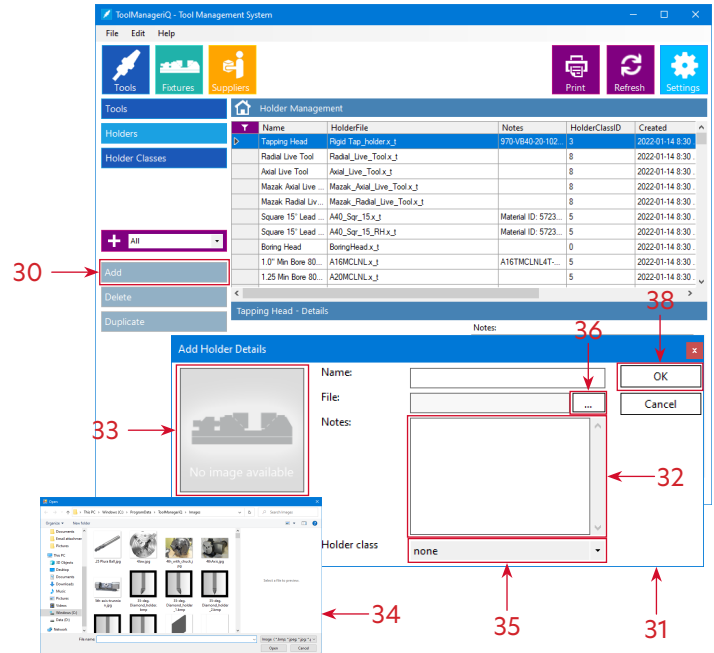
Optionally, click the image box (33) to browse for a picture (34) to add.

The **Holder Class** pull down menu (35) will have all the items that exist in that sub-section, so the appropriate Classes can be applied to each Holder.

Press the **Ellipsis** button (36) to browse for the solid model that represents the holder shape (37). Make custom models in **IGES** or **Parasolid** format, or download them from manufacturer websites. Place them in the default directory defined in **Settings**, or load them from a different location and they will be added there automatically. The solid model must be in the proper orientation that GibbsCAM supports.

**For Example:** Milling; the Z-Axis is treated as the tool axis, and the program zero is where the hangout starts.

Pressing the **OK** button (38) will add the holder to the list. A **Holder Row** can be double-clicked to bring its dialog back up for edits.



## Adding to the Fixture Sub-Section

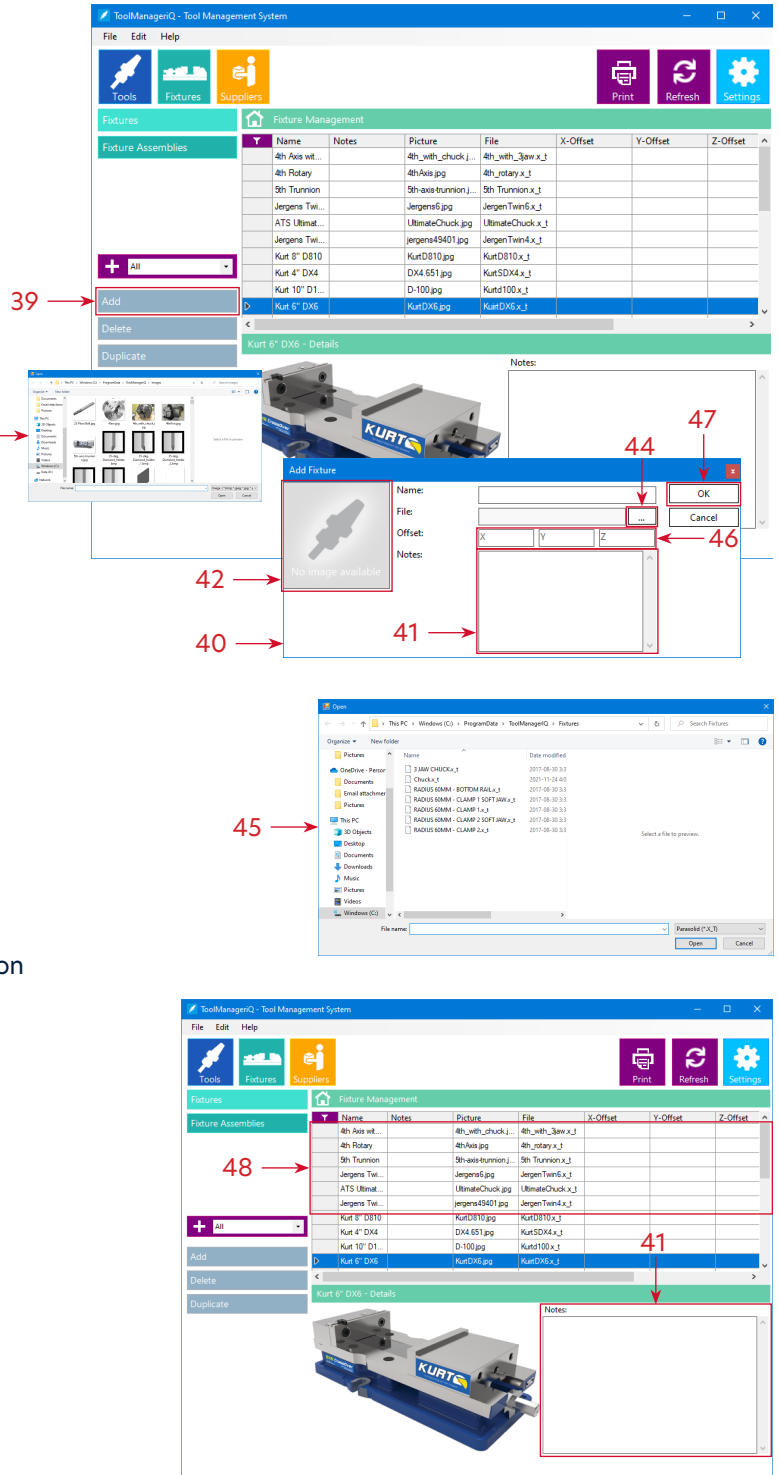
When using the **Add** button (39) in the **Fixture** sub-section this dialog (40) will appear so that a name and **Notes** can be given (41).

Click the image box (42) to browse and add a picture (43).

Press the **Ellipsis** button (44) to browse for the solid model that represents the fixture component shape (45). Make custom models in **IGES** or **Parasolid** format, or download them from manufacturer websites. The solid model must be in the proper orientation or it will have to be modified after importing. Place it in the default directory defined in the **Settings**, or load from a different location and it will be added there automatically.

If **Offset** values (46) are entered, the position of the model will be adjusted from its original location by the given amounts.

Pressing the **OK** button (47) will add the fixture to the list. A **Fixture Row** (48) can be double-clicked to bring its dialog back up for edits.



## Adding to the Fixture Assembly Sub-Section

The **Add** button (49) in the **Fixture Assembly** sub-section brings up this dialog (50) to enter a name and **Notes** (51).

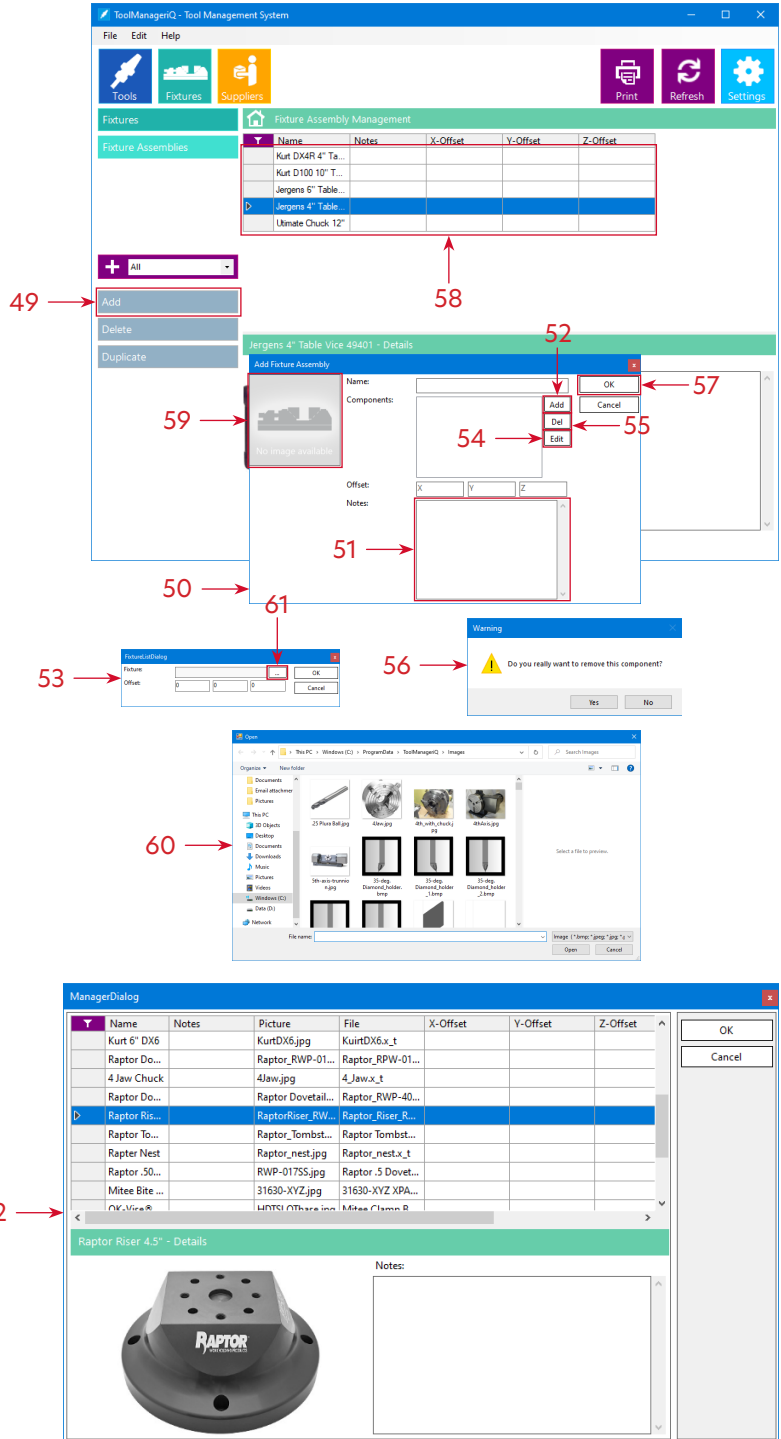
Pressing the **Add** button (52) will bring up a dialog (53) to set offsets. Pressing the **Edit** button (54) with an existing component selected will also bring up the same dialog (53) to make changes.

Pressing the **Del** button (55) with an existing **Fixture Assembly** selected will remove it with confirmation (56).

Pressing the **OK** button (57) will add the **Fixture Assembly** to the list. Double-click a **Fixture Assembly Row** (58) to bring its dialog back up for edits.

Click the image box (59) to browse and add a picture (60).

Individual components in the **Assembly** must be added to the **Fixture** sub-section first. Press the **Ellipsis** button (61) to choose from the ones that are currently in that list (62). Continue to add more assembly components until complete.



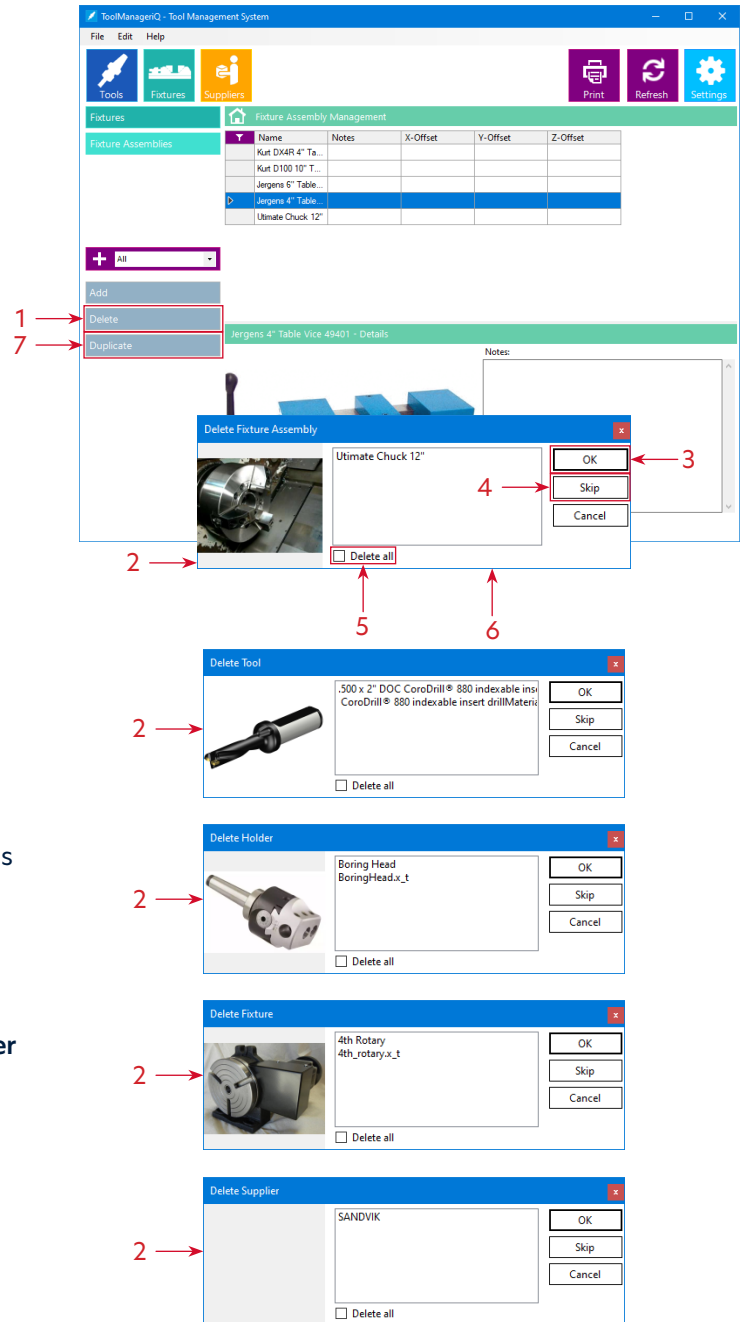
## Deleting and Duplicating Items

The **Tools, Holder, Fixture, Fixture Assembly** and **Supplier** sub-sections also have a **Delete** button (1) for removing any item, whether it was added manually or not. Multiple items can be deleted at a time.

Pressing **Delete** (1) in any of those sub-sections will show these nearly identical dialogs (2). Pressing **OK** (3) will remove the selected item. With multiple selections each item can be handled one by one while pressing **OK** (3) or **Skip** (4) independantly. Selecting **Delete All** (5) and pressing **OK** (3) will remove everything quickly. This is the **Delete Fixture Assembly** dialog (6) from the **Fixture Assembly** sub-section.

The **Delete** dialogs from the other sub-sections work the same way.

The **Duplicate** button (7) is found in the **Tools, Holder, Fixture, Fixture Assembly** and **Supplier** sub-sections. It will make copies of whatever item is selected



## Grouping

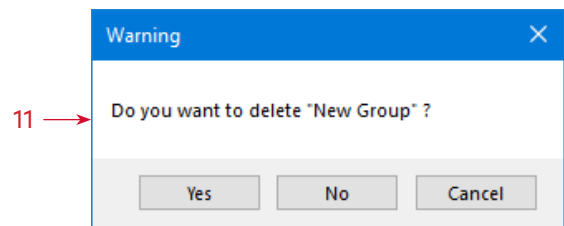
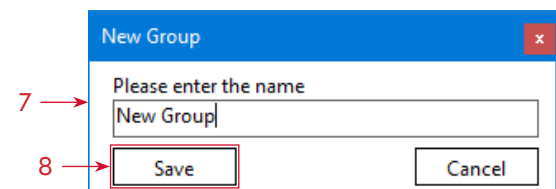
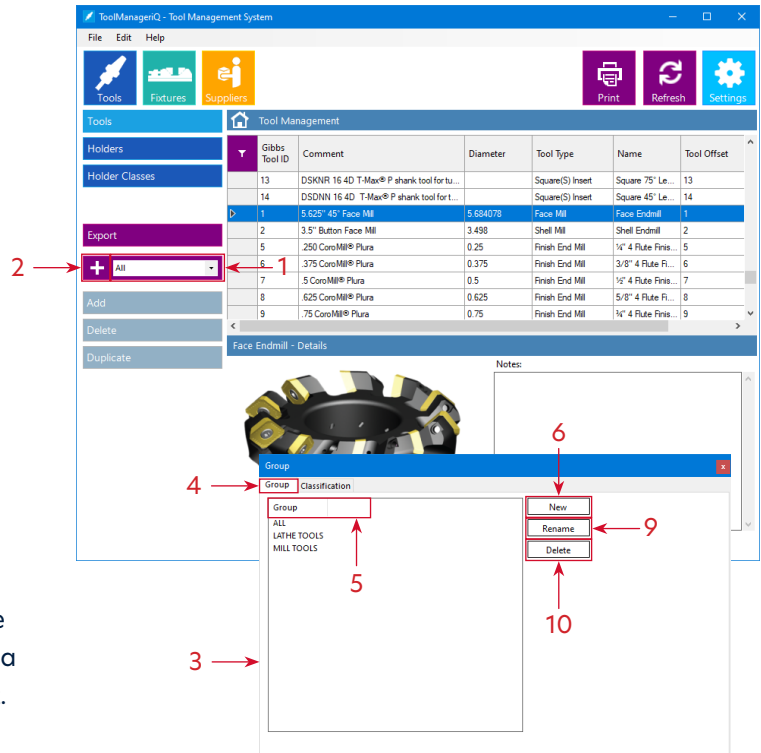
Making a group while adding a Tool has been covered on page 29, but it is only part of the Grouping system. The **Tools**, **Holder**, **Fixture**, **Fixture Assembly** and **Supplier** sub-sections all have this grouping function. Using the pull down menu (1) to select a group will only display the items that are associated to it.

The + button (2) will bring up the **Group** dialog (3). The **Group** tab (4) can be used to create and manage groups. This is the **Tools** sub-section dialog box. Click on the **Group** header (5) to sort the names in ascending or descending order.

Pressing the **New** button (6) will bring up the **New Group** dialog (7) where it can be given a name. Pressing **Save** (8) will add it to the list.

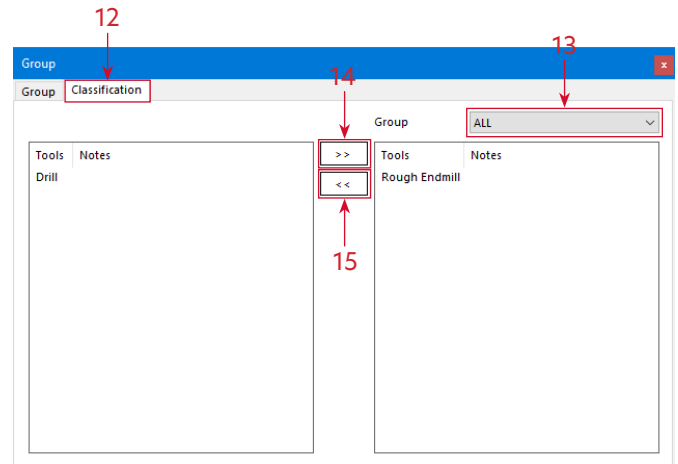
The **Rename** button (9) opens the same dialog (7) to make changes.

Pressing the **Delete** button (10) will remove the selected entry with confirmation (11).

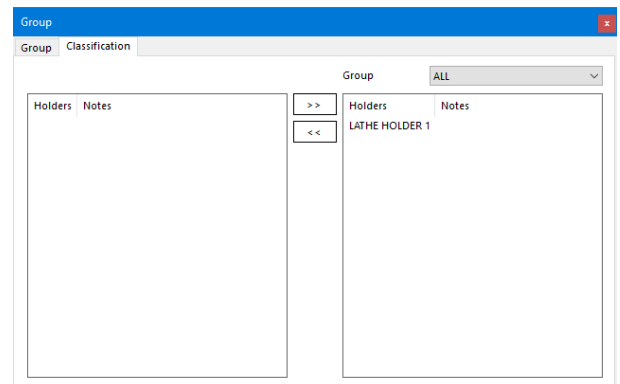
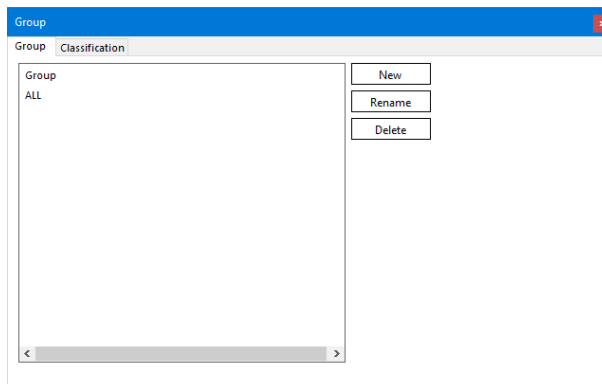


## Grouping

The **Classification** tab (12) is used to add and remove items from a **Group**. First choose the **Group** in the pull down menu (13). Select items on the left and press the >> button (14) to add, or select items on the right and press the << button (15) to remove. Multiple items can be added and removed with one button press. Groups can be used by tool type, machine, job, brand, tool material, part material, etc. Add to Groups by selecting the pull down menu when adding tools, or right-clicking a pre-existing row.



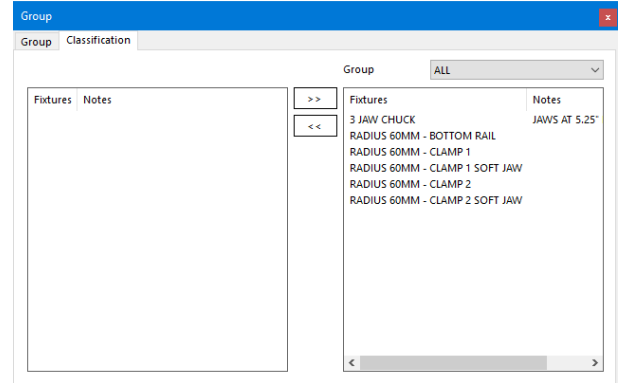
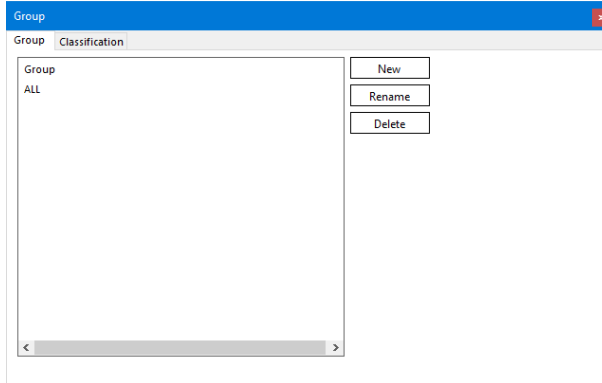
The dialog works the same in the **Holder** sub-section.



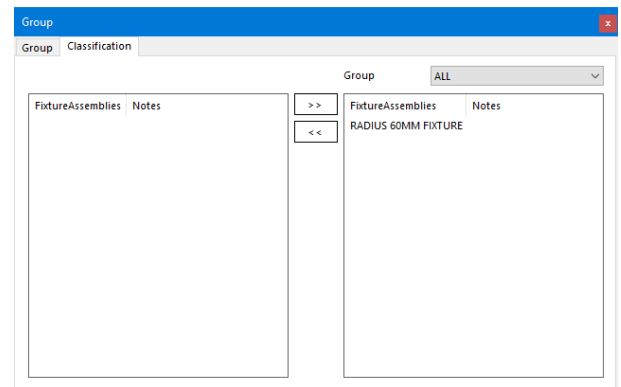
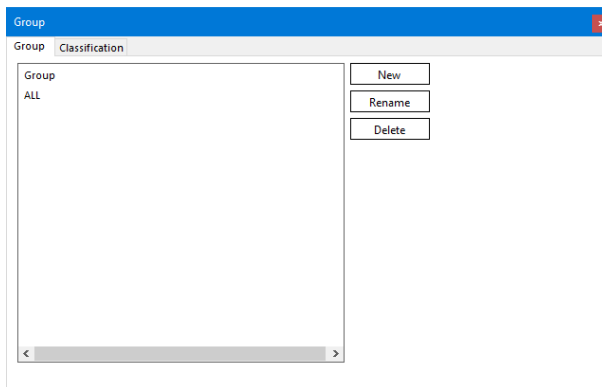


## List View

The dialog works the same in the **Fixture** sub-section.



The dialog works the same in the **Fixture Assembly** sub-section.



The **Tools**, **Holder**, **Fixture**, **Fixture Assembly** and **Supplier** sub-sections all use a customizable list view (1) to display their items. Selecting items in the list supports regular functions like holding **CTRL** for multiple selections, or holding **SHIFT** between two selections to highlight everything in the middle.

	Comment	Corner Radius	Number Of Flutes	Flute Length	Diameter
1 →					0
					0
					0

## List View

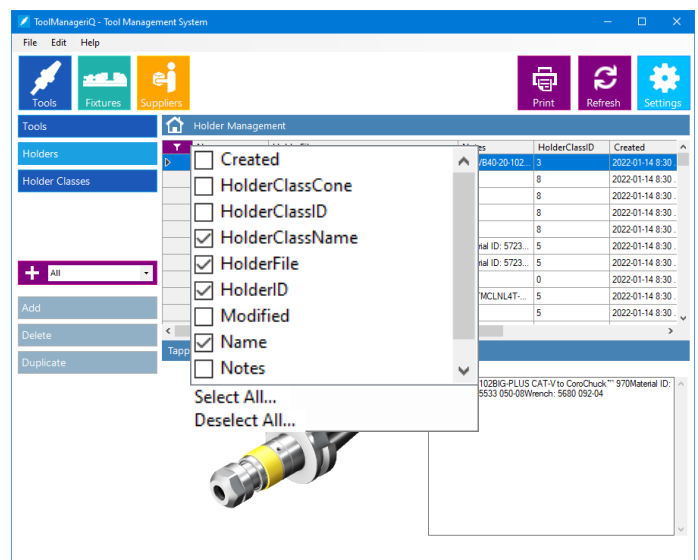
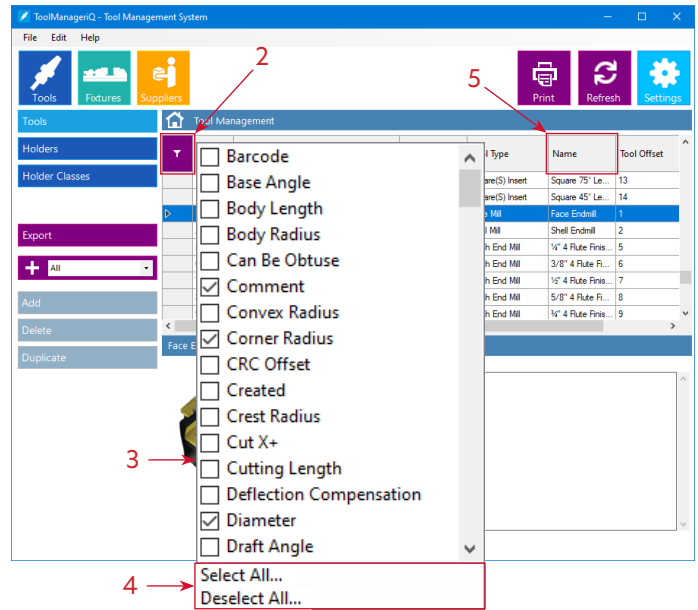
Right-click the upper-left purple **Filter** icon area in the corner (2) to choose what columns are shown and hidden with the column filter (3), along with a quick option to **Select** or **Deselect All** (4). Each sub-section has its own selection of columns. Anything with a check mark applied will be shown in the list view.

Left-clicking the same purple column **Filter** icon (2) will select all list items at once.

Click a column header (5) to sort the contents in ascending and descending order.

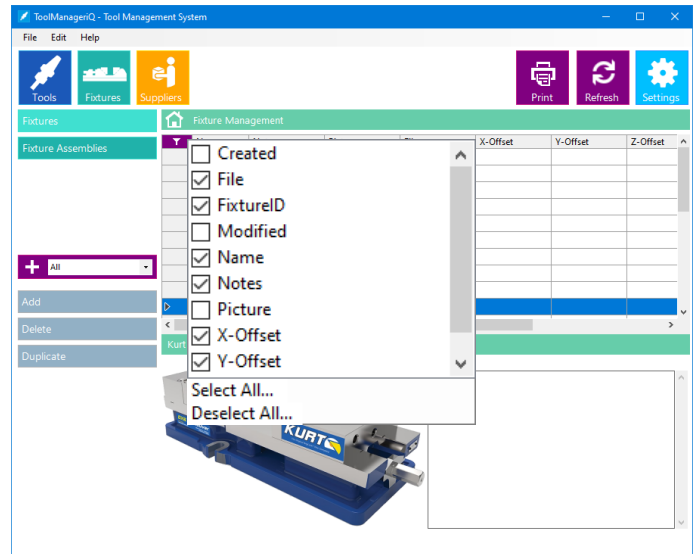
Click and hold on a column header (5) and drag it left or right to reorder the columns. A list view line must be selected after reordering to the columns or the changes will not be permanent.

These are the available columns in the **Holder** sub-section.

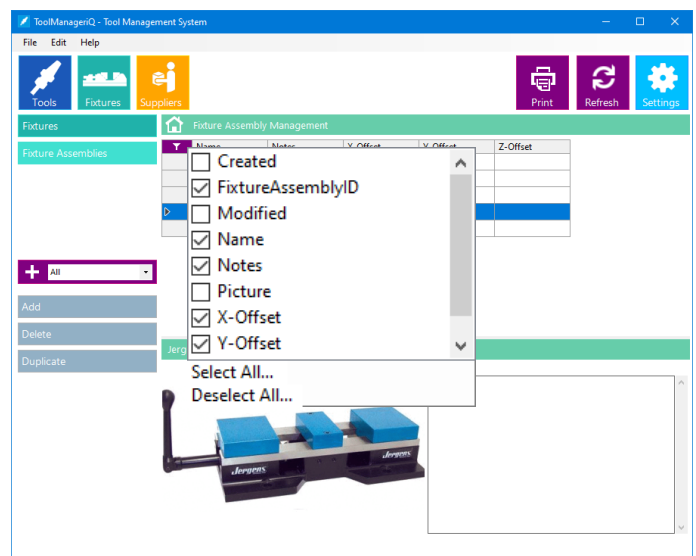


## List View

These are the available columns in the **Fixture** sub-section.

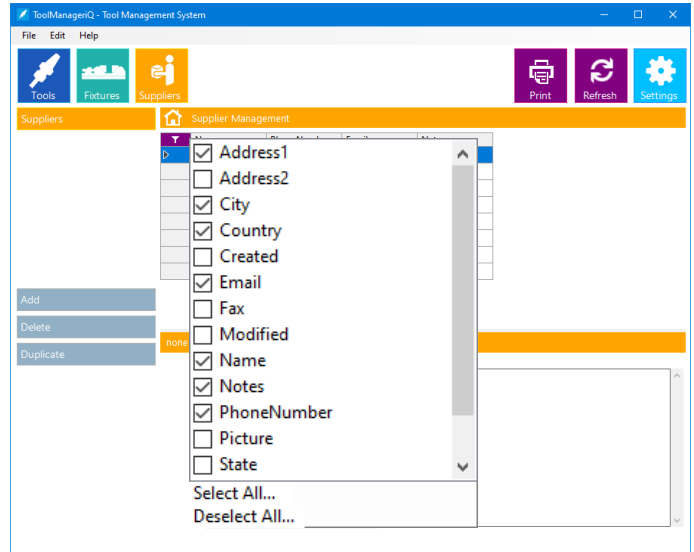


These are the available columns in the **Fixture Assembly** sub-section.

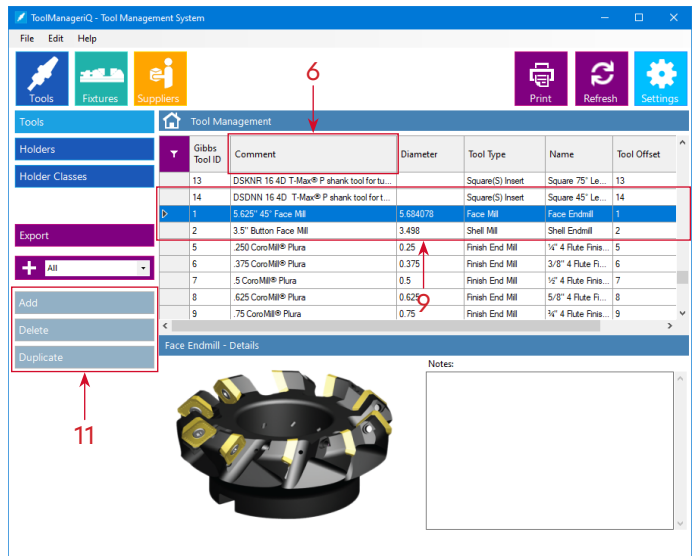


## List View

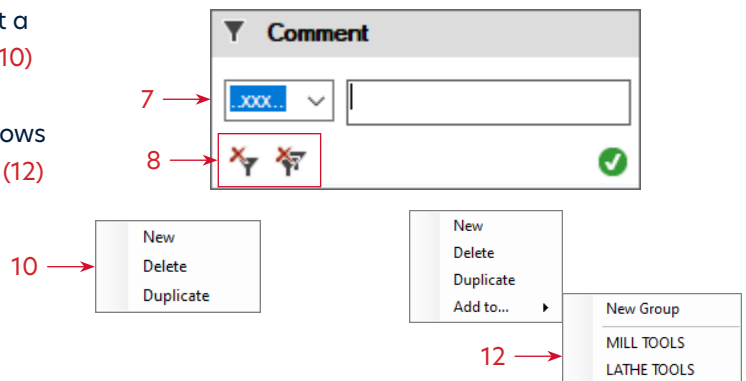
These are the available columns in the **Supplier** sub-section.



Right-click on a column header (6) to apply a **Filter** or **Search** (7) to make it easier to find an item. Only items with the given text in the selected column will be shown. Add them to filter out everything but what is required. Filters can be applied to multiple columns at once to narrow down the search even more. Use the **Remove Filter** and **Remove All** buttons (8) to clear, one or all, currently applied filters.

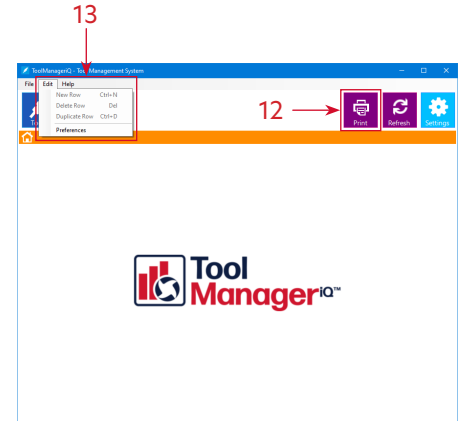


Right-click on a row (9) in the list view to get a context menu. **New**, **Delete** and **Duplicate** (10) do the same things as the **Add**, **Delete**, **Duplicate** buttons (11). If the sub-section allows grouping it will also have an **Add To** option (12) to create a new group, or add it to an existing group.



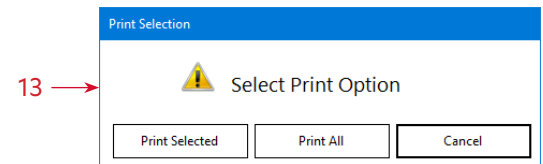
## Printing

The **Edit** menu (13) also has the same options going on with **New Row**, **Delete Row** and **Duplicate Row** doing the same thing as the **Add**, **Delete** and **Duplicate** buttons (11). Keyboard shortcuts are also available.

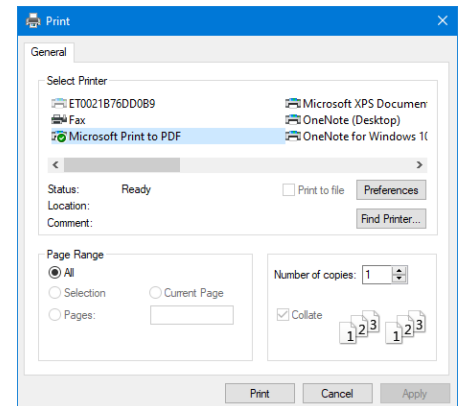


The lists views in the **Tools**, **Holder**, **Fixture**, **Fixture Assembly** and **Supplier** sub-sections can be printed.

Press the **Print** button (12) to show this dialog (13) which gives the option to print either selected lines, by pressing **Yes**. Or everything, by pressing **No**.



From there the printing will proceed like normal.

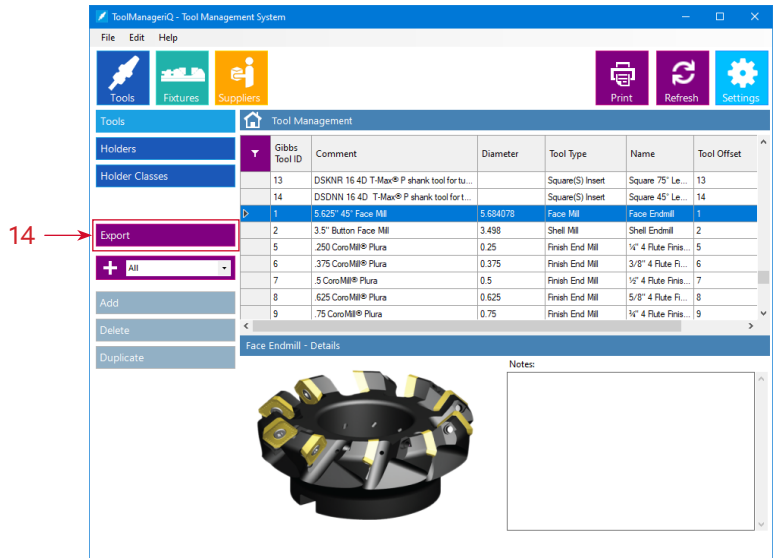


ToolManagerIQ - CAM Solutions - 2022-01-14 9:56:57 AM

Tool#	Comment	DB Name	Diameter	Tool Type ID	Tool Offset	Item Number
2	DIA 55 FACEMILL	Shell mill	55	0	2	424-20
3	DIA 20 ENDOUROUGH ENDMILL	Roughing Endmill	20	0	3	A13827
4	DIA 12 DRILL	Standard Drill	12	0	4	68.1755
5	DIA 10 FINISH ENDMILL	Finish Endmill	10	0	5	PLURA
6	DIA 12 SPOTDRILL	Spot Drill	12	0	6	6993.1-B
7	DIA 5 DRILL	Standard Drill	5	0	7	446098
8	TAP M8 x 1	Rigid Tap	8	0	8	797999-GT

Exporting from the Tools Sub-Section

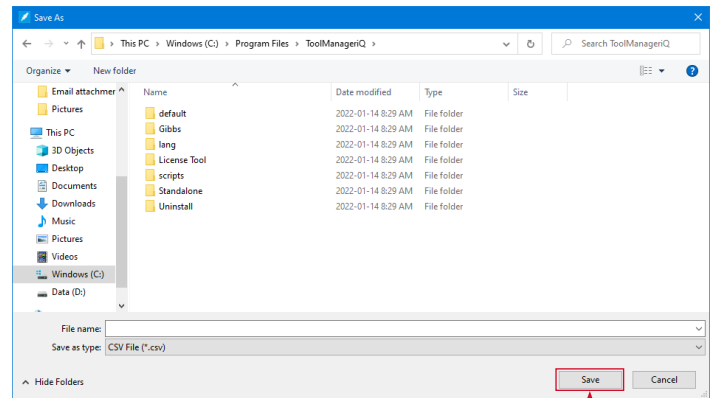
The **Tools** sub-section has an **Export** button (14) for saving item information.



Upon pressing the **Export** button (14), select the desired file type and where to save it. It currently supports **CSV** and **XML**.

CSV is good for exporting any type of tool to Microsoft Excel for more manipulation. The CSV format of comma separated values can be opened and imported directly with Excel.

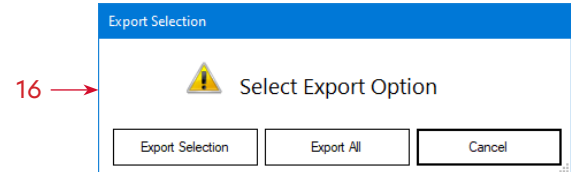
XML creates an XML file of any type of tool that can be used in other programs for further manipulation.



15

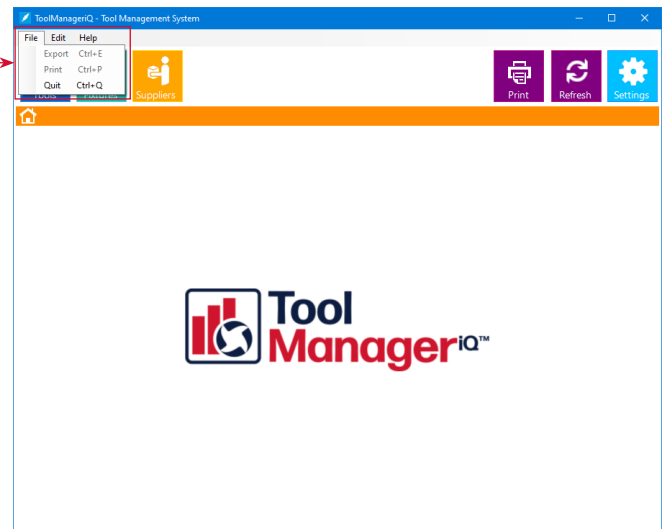
## Exporting from the Tools Sub-Section

Press **Save** (15) to show this dialog (16) which allows for additional selections, if necessary. Press **Yes** to begin export the items that are selected, or press **No** to export everything.



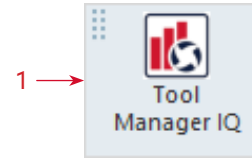
C	D	E	F	G	H
DIAMETER	TYPE	DESCR	CODE	ANGLE	HEIGHT
10	DRILL	Spot Drill	SPOTDRILL DIA 10	90	100
20	MILL	Finish Endmill	ENDMILL DIA 20		100
20	MILL	Ball Endmill	FULLRADIUS ENDMILL DIA 12		40

The **Export** and **Print** options are also found in the **File** menu (17), along with the **Quit** command to shut down ToolManagerIQ™. Keyboard shortcuts are also available.

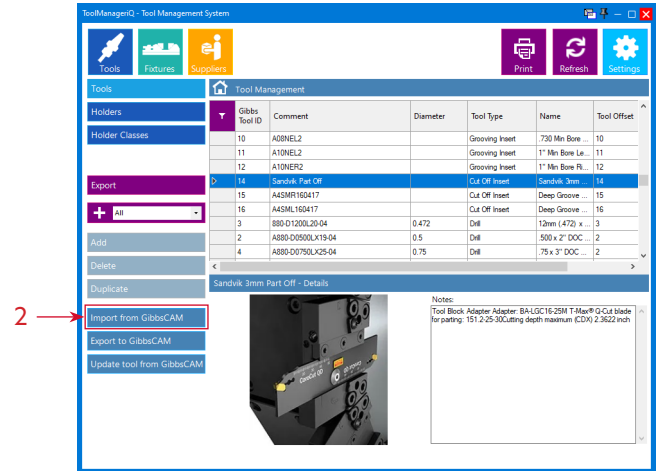


## Direct Import & Export with GibbsCAM

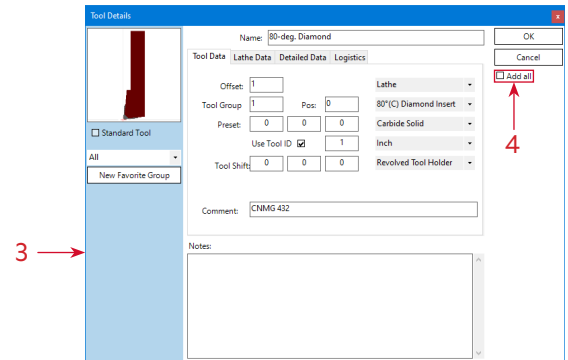
The integrated version that runs in GibbsCAM has the addition of **Direct Import** and **Export** functions in the **Tools**, **Holder**, **Fixture** and **Fixture Assembly** sub-sections. It can be opened using the icon in the **Commands Toolbar** (1).



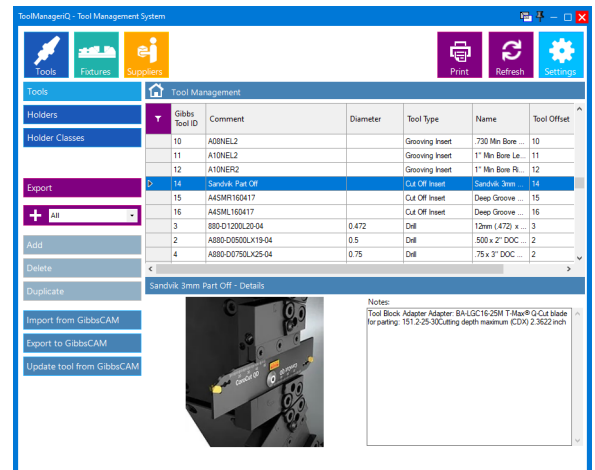
The **Import from GibbsCAM** button (2) takes selected items into ToolManagerIQ™. Available in **Tools**, **Holder**, and **Fixture** sub-sections. It will automatically create an image and populate most values.



The **Tools** sub-section requires at least one tool to be selected in GibbsCAM. The **Import from GibbsCAM** button (2) calls up the same dialog as when a tool is added manually (3). The bonus is that most of the values, image and name will already be entered automatically. Add a custom Tool image and name, select **Standard Tool** or **Group** and press **OK**. Double-click a **Tool Row** to bring its dialog back up for edits. However, they will not automatically carry in to GibbsCAM.



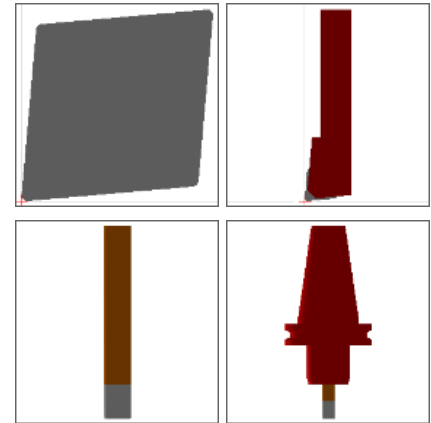
If multiple tools are selected the same dialog will come up. Review and change details and press **OK** one by one. Additionally, select the **Add All** (4) function and press **OK** to add everything as-is, all at once. If a group is selected, then all of the tools are added to that group. Great for adding to a specific job group or other grouping criteria.



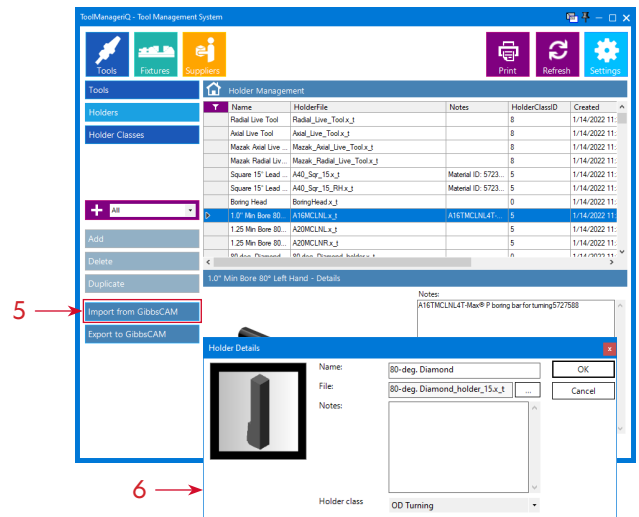


## Direct Import & Export with GibbsCAM

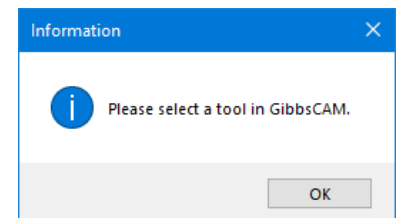
If a single tool is needed, then that will be added.  
 If a **Standard Tool Holder** is applied then it will save it with the tool as a **Tool Assembly**.  
 That can be convenient for tools that do not change Holders. If it is not a **Standard Holder** then it will bring the following **Holder Import** dialog up and handle it separately from the tool.  
 Even if it ends up in the **Holder** section the **Tool** and **Holder** will still import to GibbsCAM together as a **Tool Assembly**.



The **Holder** sub-section also requires at least one tool to be selected in GibbsCAM. When the **Import from GibbsCAM** button (5) is pressed it will bring up the same dialog as when one is added manually (6). The bonus is that the name, file and image will already be entered automatically. New images can be selected, names and add notes, or add holder classes, press **OK** to add to the list like normal. If more than one tool is selected then **OK** will have to be pressed for each **Holder Import**. This is also the dialog that will come up with **Import from GibbsCAM** in the **Tools** sub-section on a tool with a **Non-Standard Holder**. A solid model of the holder will be created automatically. Double-click a **Holder Row** to bring its dialog back up for edits. The changes will not automatically carry over to GibbsCAM.

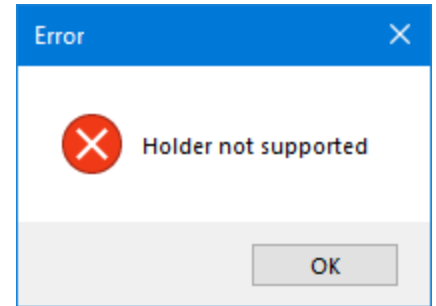


Press **Import from GibbsCAM** with nothing selected and this error message will appear.

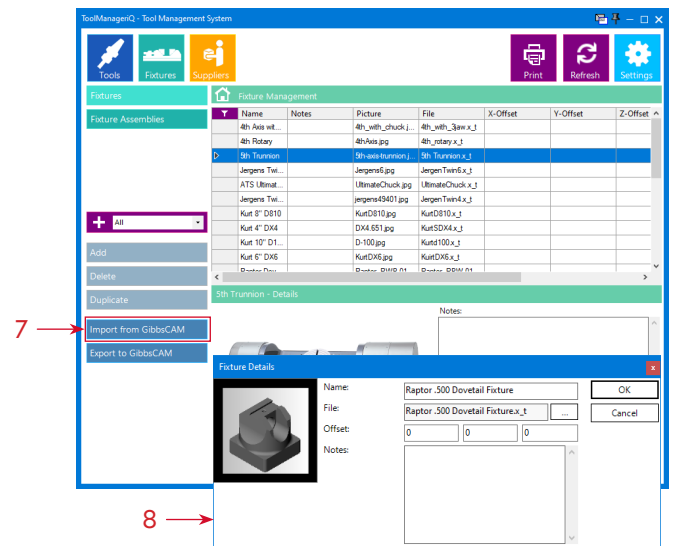


Direct Import & Export with GibbsCAM

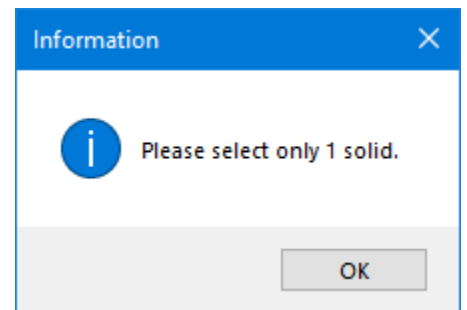
Holders that are not supported will get an error too.



The **Fixture** sub section requires a single solid to be selected in GibbsCAM. Pressing the **Import from GibbsCAM** button (7) brings up the same dialog as when one is added manually (8). The bonus is that the name, file and image are already entered automatically. Select a new image, name, add notes and offsets and press **OK** to add to the list like normal. Double-click a **Fixture Row** to bring its dialog back up for edits. These will not automatically carry over to GibbsCAM.



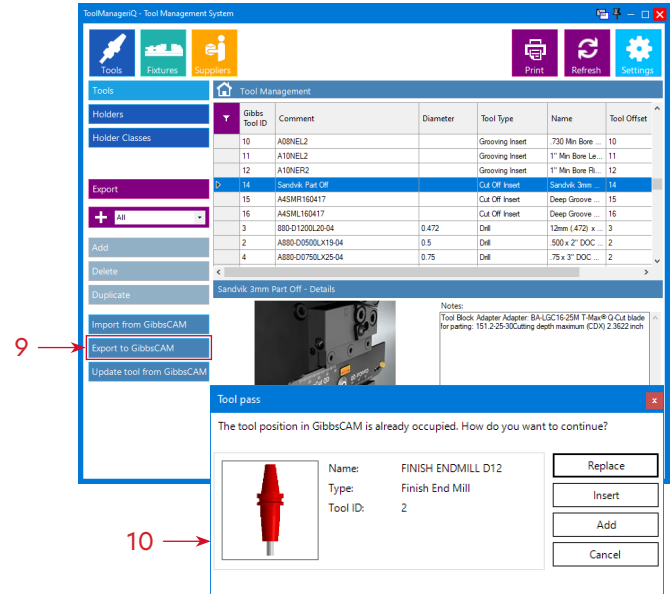
When no solid or multiple solids are selected, this **Error** will come up. Adding more than a single fixture at a time is not possible here.



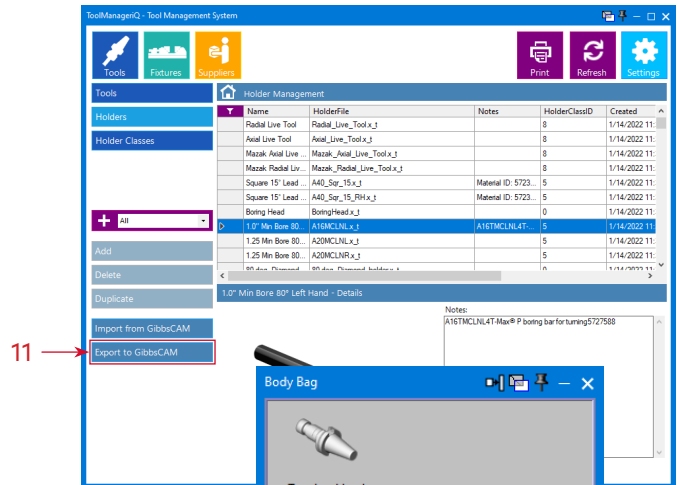
## Direct Import & Export with GibbsCAM

The **Export to GibbsCAM** button (9) will take selected items and bring them into GibbsCAM. It is available in the **Tools**, **Holder**, **Fixture** and **Fixture Assembly** sub-sections.

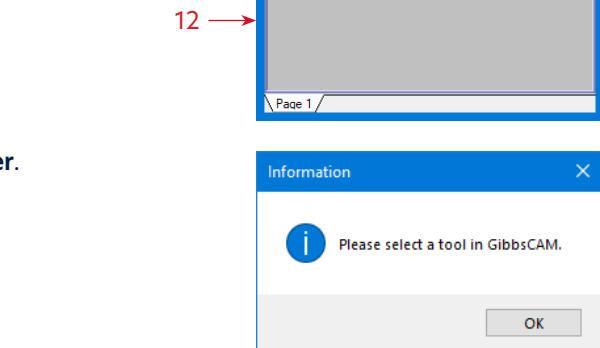
The **Tools** sub-section requires at least one tool to be selected in ToolManagerIQ.™ When the **Export to GibbsCAM** button (9) is pressed the selected tool, or tools, will be added to the list.



If the spot and position in the tool list is already filled this dialog (10) will come up. **Replace** will overwrite the old GibbsCAM tool with the new one from TMiQ, but all operations tied to the old one will be deleted. **Insert** will put the new tool in the first available Open Tool List slot instead. **Add** will put the new tool right after the last tool in the list instead. **Cancel** will abort the transfer of that tool. If multiple tools are selected and more than one have this issue then the same dialog will pop up each time.



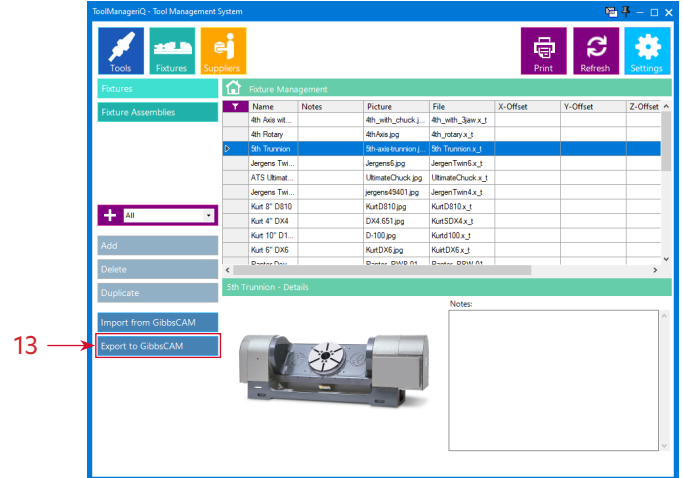
The **Holder** sub-section also needs at least one **Tool Holder** to be selected in TMiQ. When the **Export to GibbsCAM** button (11) is pressed the **Tool Holder** will be applied to the selected tool, or tools. The solid will be imported into the body bag (12) and used as a **Custom Holder**.



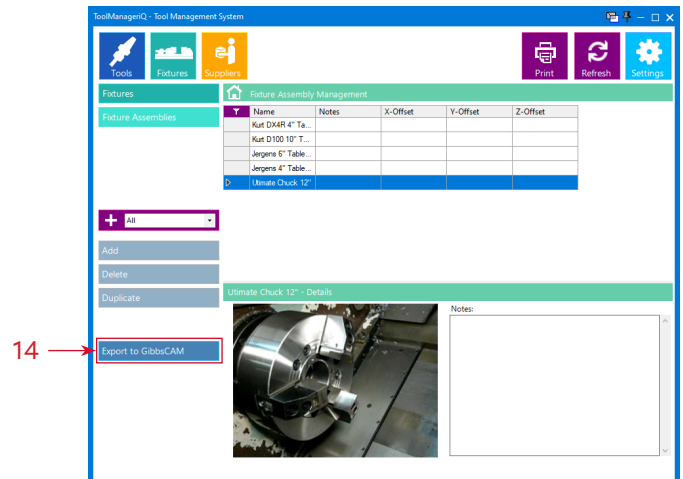
Pressing **Export to GibbsCAM** (11) with nothing selected will create an **Error**.

Direct Import & Export with GibbsCAM

The **Fixture** sub-section requires at least one fixture component to be selected in TMiQ. When the **Export to GibbsCAM** button (13) is pressed the solid, or solids, will appear in the workspace. This may take some time depending on the amount of components and their complexity.



The **Fixture Assembly** section requires at least one assembly to be selected in TMiQ. When the **Export to GibbsCAM** button (14) is pressed all components in the selected assembly, or assemblies, will appear in the workspace. This may take some time depending on the number and complexity of the components.



The **Update tool from GibbsCAM** button (15) will refresh the selected tool in TMiQ with information from the currently selected tool in GibbsCAM. This is useful if you make a change in GibbsCAM and want to update the database.

